



# SIP Industries

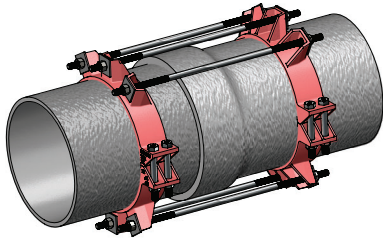
Quality Manufacturers Since 1960

**EZ GRIP®**  
PTPVCDI

## 4" - 16" PIPE TO PIPE BELL JOINT RESTRAINT FOR DI PIPE

### Submittal Information

Project Name / Location:	
Engineer:	
Referenced Specs:	
Distributor / Contractor:	

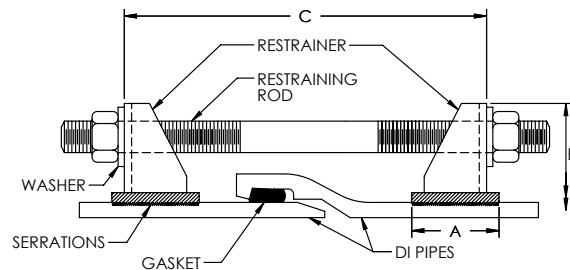


### Optional Specifications

Coating:	EnviroShield, Direct To Metal (DTM) Alkyd Enamel (Red)		
	EZ-Shield® Polyester Based Powder Coating (Red)		
	Other - Specify:		
Rods, Bolts: & Nuts	Standard High Strength Low Alloy Steel (HSLA) <i>In Accordance With ANSI/AWWA C111/A21.11</i>		
	Fluoropolymer Corrosion Resistant Coating		
	Stainless Steel:	Type 304	Type 316
	Other - Specify:		

### General Specifications

- Material** : Harness bodies are Ductile Iron per ASTM A536, Grade 65-45-12  
Clamping bolts and nuts are zinc plated carbon steel, ASTM 307
- Pressure** : The grip of the 360° circumferential serrations increases as the hydrostatic pressure increases.
- Dimensions** : Restraint compatible with Ductile iron pipe manufactured in accordance with ANSI/AWWA C150 & C151 /A21.50 & A21.51.  
Harness is compatible with all bell and spigot (push-on) joint socket DI pipe
- Installations** : Install in accordance with SIP installation procedures and intent of AWWA C600 / M41  
Pipe ends must be free from defects to allow proper gland engagement to the pipe ends  
**Note:** There are no additional tools required for installation other than the tools required to install standard sizes of hex nuts from 5/8"-1 1/4". The hex head bolts and rods shall be designed to tighten clockwise. The hex head bolts and rods are manufactured to allow for disassembly and re-installation of the restraint.
- Deflection** : Restraint allows the full joint deflection dictated by pipe manufacturer's recommendation, and maintains the seal while under pressure, and while subjected to ground movements



### RECOMMENDED TORQUE (CLAMPING BOLTS)

PIPE SIZE (IN)	RANGE OF TORQUE (FT/LBS)
4-8	110-120
10-12	110-120
14-16	200-210

### Technical Specifications

Select Size	Size	DI Pipe O.D.	Series Number	A	B (Approx.)	C (Max.)	X (Min.)	Restraint Bolts/Rods		Clamping Bolts		Max Pressure Rating (PSI)	Approx. Weight (Lbs)
								Qty	Size	Qty	Size		
	4	4.80	PTPVCDI04	1.12	9.15	12.00	6.29	2	¾ X 17	4	¾ X 3 ½	250	16
	6	6.90	PTPVCDI06	1.15	11.12	13.00	8.13	2	¾ X 17	4	¾ X 3 ½	250	20
	8	9.05	PTPVCDI08	1.47	14.75	15.00	10.60	2	¾ X 17	4	¾ X 4	250	32
	10	11.10	PTPVCDI10	1.38	16.82	16.00	12.66	4	¾ X 24	4	¾ X 5	200	52
	12	13.20	PTPVCDI12	1.42	19.45	18.00	14.80	4	¾ X 24	4	¾ X 5	200	56
	14	15.30	PTPVCDI14	4.00	22.56	24.00	18.10	6	¾ X 30	8	¾ X 7	150	150
	16	17.40	PTPVCDI16	4.00	24.64	28.00	20.20	6	¾ X 30	8	¾ X 7	100	154

All dimensions are in inches unless noted otherwise. All weights are approximate in pounds unless noted otherwise.

Supporting documentation for the above 'General Specifications' and 'Optional Specifications' are available upon request to review, in addition to Installation Instructions and any requested material samples

Please contact SIP for technical assistance of nonstandard applications and pressures

Please refer to our web page [www.sipindustries.com](http://www.sipindustries.com) for up to date product data and technical advisories

V 0524-01