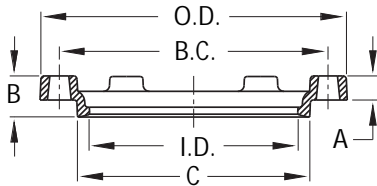


Submittal Information

| | |
|---------------------------|--|
| Project Name / Location: | |
| Engineer: | |
| Referenced Specs: | |
| Distributor / Contractor: | |



Optional Specifications

| | |
|---------------|---|
| Coating: | Asphaltic Seal Coat <i>In Accordance With ANSI/AWWA C104/A21.4</i> |
| | Fusion-Bonded Epoxy (FBE) Powder (Red Oxide Color) <i>In Accordance With ANSI/AWWA C116/A21.16</i> |
| | Other - Specify: |
| Bolts / Nuts: | Standard High Strength Low Alloy Steel (HSLA) <i>In Accordance With ANSI/AWWA C111/A21.11</i> |
| | Stainless Steel: Type 304 Type 316 |
| | Other - Specify: |
| Gaskets: | Standard SBR (Buna-S) <i>In Accordance With ANSI/AWWA C111/A21.11</i> |
| | Other - Specify: |

General Specifications

- Material : Ductile Iron per ASTM A536, Grade 65-45-12
- Pressure : 350 PSI rating for 2" - 24" sizes, 250 PSI rating for 30" - 48" sizes and 150 PSI rating for 54" - 64" sizes
- Testing : In accordance with ANSI/AWWA C111/A21.11
- Dimensions : In accordance with ANSI/AWWA C111/A21.11, C153/A21.53 and are in inches unless otherwise noted
- Weights : Are in pounds, unless otherwise noted and do not include accessories
- Approvals : NSF - 61 & 372 for coating(s) | Standard Glands sizes 3"-24" FM Approved



Technical Specifications

STANDARD GLANDS

| Select Size | Size | Series Number | O.D. | A | B | C | I.D. | B.C. | Bolt Hole | Bolt Qty | Approx. Weight (LBS) |
|-------------|------|---------------|-------|------|------|-------|-------|-------|-----------|----------|----------------------|
| | 2 | 6660 | 6.12 | 0.62 | 1.37 | 3.40 | 2.61 | 4.75 | 0.75 | 2 | 1 |
| | 3 | 6661 | 7.69 | 0.62 | 1.37 | 4.84 | 4.06 | 6.19 | 0.75 | 4 | 2 |
| | 4 | 6662 | 9.12 | 0.75 | 1.50 | 5.92 | 4.90 | 7.50 | 0.88 | 4 | 3 |
| | 6 | 6663 | 11.12 | 0.88 | 1.63 | 8.02 | 7.00 | 9.50 | 0.88 | 6 | 5 |
| | 8 | 6664 | 13.37 | 1.00 | 1.75 | 10.17 | 9.15 | 11.75 | 0.88 | 6 | 6 |
| | 10 | 6665 | 15.62 | 1.00 | 1.75 | 12.22 | 11.20 | 14.00 | 0.88 | 8 | 8 |
| | 12 | 6666 | 17.88 | 1.00 | 1.75 | 14.32 | 13.30 | 16.25 | 0.88 | 8 | 9 |
| | 14 | 6667 | 20.25 | 1.25 | 2.00 | 16.40 | 15.44 | 18.75 | 0.88 | 10 | 13 |
| | 16 | 6668 | 22.50 | 1.31 | 2.06 | 18.50 | 17.54 | 21.00 | 0.88 | 12 | 17 |
| | 18 | 6669 | 24.83 | 1.38 | 2.13 | 20.60 | 19.64 | 23.25 | 0.88 | 12 | 30 |
| | 20 | 6670 | 27.08 | 1.44 | 2.19 | 22.70 | 21.74 | 25.50 | 0.88 | 14 | 35 |
| | 24 | 6671 | 31.58 | 1.56 | 2.31 | 26.90 | 25.94 | 30.00 | 0.88 | 16 | 50 |
| | 30 | 6672 | 39.12 | 2.00 | 2.75 | 33.29 | 32.17 | 36.88 | 1.13 | 20 | 85 |
| | 36 | 6673 | 46.00 | 2.00 | 2.75 | 39.59 | 38.47 | 43.75 | 1.13 | 24 | 115 |
| | 42 | 6674 | 53.12 | 2.00 | 2.75 | 45.79 | 44.67 | 50.62 | 1.38 | 28 | 143 |
| | 48 | 6675 | 60.00 | 2.00 | 2.75 | 52.09 | 50.97 | 57.50 | 1.38 | 32 | 237 |
| | 54 | 6676 | 65.70 | 2.00 | 2.75 | 58.82 | 57.73 | 63.20 | 1.38 | 36 | 325 |
| | 60 | 6677 | 70.22 | 2.00 | 2.75 | 62.87 | 61.78 | 67.72 | 1.38 | 36 | 360 |
| | 64 | 6678 | 74.36 | 2.00 | 2.75 | 66.96 | 65.84 | 71.86 | 1.38 | 38 | 415 |

Technical Specifications

OVERSIZE GLANDS

| Select Size | Size | Series Number | O.D. | A | B | C | I.D. | B.C. | Bolt Hole | Bolt Qty | Approx. Weight (LBS) |
|-------------|------|---------------|-------|------|------|-------|-------|-------|-----------|----------|----------------------|
| | 2 | 6660OS | 9.12 | 0.62 | 1.50 | 5.92 | 5.10 | 7.50 | 0.88 | 4 | 3 |
| | 3 | 6661OS | 9.12 | 0.62 | 1.50 | 5.92 | 5.10 | 7.50 | 0.88 | 4 | 3 |
| | 4 | 6662OS | 9.12 | 0.62 | 1.50 | 5.92 | 5.10 | 7.50 | 0.88 | 4 | 3 |
| | 6 | 6663OS | 11.12 | 0.62 | 1.63 | 8.02 | 7.20 | 9.50 | 0.88 | 6 | 5 |
| | 8 | 6664OS | 13.37 | 0.75 | 1.75 | 10.17 | 9.40 | 11.75 | 0.88 | 6 | 6 |
| | 10 | 6665OS | 15.62 | 0.88 | 1.75 | 12.22 | 11.50 | 14.00 | 0.88 | 8 | 8 |
| | 12 | 6666OS | 17.88 | 1.00 | 2.00 | 14.32 | 13.60 | 16.25 | 0.88 | 8 | 9 |
| | 16 | 6668OS | 22.50 | 1.00 | 2.06 | 18.50 | 17.90 | 21.00 | 0.88 | 12 | 17 |



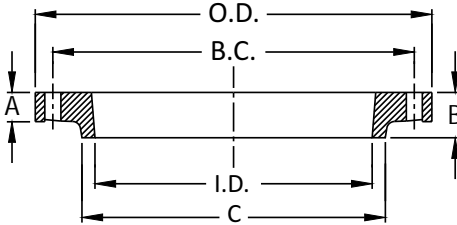
2" - 64" FULL BODY MECHANICAL JOINT GLANDS

Submittal Information

| | |
|---------------------------|--|
| Project Name / Location: | |
| Engineer: | |
| Referenced Specs: | |
| Distributor / Contractor: | |

Optional Specifications

| | |
|---------------|---|
| Coating: | Asphaltic Seal Coat <i>In Accordance With ANSI/AWWA C104/A21.4</i> |
| | Fusion-Bonded Epoxy (FBE) Powder (Red Oxide Color) <i>In Accordance With ANSI/AWWA C116/A21.16</i> |
| | Other - Specify: |
| Bolts / Nuts: | Standard High Strength Low Alloy Steel (HSLA) <i>In Accordance With ANSI/AWWA C111/A21.11</i> |
| | Stainless Steel: Type 304 Type 316 |
| | Other - Specify: |
| Gaskets: | Standard SBR (Buna-S) <i>In Accordance With ANSI/AWWA C111/A21.11</i> |
| | Other - Specify: |



General Specifications

- Material : Ductile Iron per ASTM A536, Grade 65-45-12
- Pressure : 350 PSI rating for 2" - 24" sizes, 250 PSI rating for 30" - 48" sizes and 150 PSI rating for 54" - 64" sizes
- Testing : In accordance with ANSI/AWWA C111/A21.11
- Dimensions : In accordance with ANSI/AWWA C111/A21.11, C110/A21.10 and are in inches unless otherwise noted
- Weights : Are in pounds, unless otherwise noted and do not include accessories
- Approvals : NSF - 61 & 372 for coating(s)



Technical Specifications

| Select Size | Size | Series Number | O.D. | A | B | C | I.D. | B.C. | Bolt Hole | Bolt Qty | Approx. Weight (LBS) |
|-------------|------|---------------|-------|------|------|-------|-------|-------|-----------|----------|----------------------|
| | 2 | 6693 | 6.12 | 0.62 | 1.37 | 3.40 | 2.61 | 4.75 | 0.75 | 2 | 1.00 |
| | 3 | 6694 | 7.69 | 0.62 | 1.37 | 4.84 | 4.06 | 6.19 | 0.75 | 4 | 3.71 |
| | 4 | 6695 | 9.12 | 0.75 | 1.50 | 5.92 | 4.90 | 7.50 | 0.88 | 4 | 6.04 |
| | 6 | 6696 | 11.12 | 0.88 | 1.63 | 8.02 | 7.00 | 9.50 | 0.88 | 6 | 10.45 |
| | 8 | 6697 | 13.37 | 1.00 | 1.75 | 10.17 | 9.15 | 11.75 | 0.88 | 6 | 14.39 |
| | 10 | 6698 | 15.62 | 1.00 | 1.75 | 12.22 | 11.20 | 14.00 | 0.88 | 8 | 20.07 |
| | 12 | 6699 | 17.88 | 1.00 | 1.75 | 14.32 | 13.30 | 16.25 | 0.88 | 8 | 23.83 |
| | 14 | 6700 | 20.25 | 1.25 | 2.00 | 16.40 | 15.44 | 18.75 | 0.88 | 10 | 36.25 |
| | 16 | 6701 | 22.50 | 1.31 | 2.06 | 18.50 | 17.54 | 21.00 | 0.88 | 12 | 43.93 |
| | 18 | 6702 | 24.75 | 1.38 | 2.13 | 20.60 | 19.64 | 23.25 | 0.88 | 12 | 52.32 |
| | 20 | 6703 | 27.00 | 1.44 | 2.19 | 22.70 | 21.74 | 25.50 | 0.88 | 14 | 63.01 |
| | 24 | 6704 | 31.50 | 1.56 | 2.31 | 26.90 | 25.94 | 30.00 | 0.88 | 16 | 85.91 |
| | 30 | 6705 | 39.12 | 2.00 | 2.75 | 33.29 | 32.17 | 36.88 | 1.13 | 20 | 174.20 |
| | 36 | 6706 | 46.00 | 2.00 | 2.75 | 39.59 | 38.47 | 43.75 | 1.13 | 24 | 227.65 |
| | 42 | 6707 | 53.12 | 2.00 | 2.75 | 45.79 | 44.67 | 50.62 | 1.38 | 28 | 299.91 |
| | 48 | 6708 | 60.00 | 2.00 | 2.75 | 52.09 | 50.97 | 57.50 | 1.38 | 32 | 365.57 |
| | 54 | 6709 | 65.70 | 2.00 | 2.75 | 58.82 | 57.73 | 63.20 | 1.38 | 36 | 355.78 |
| | 60 | 6709.60 | 70.22 | 2.00 | 2.75 | 62.87 | 61.78 | 67.72 | 1.38 | 36 | 406.10 |
| | 64 | 6709.64 | 74.36 | 2.00 | 2.75 | 66.96 | 65.84 | 71.86 | 1.38 | 38 | 436.45 |

Supporting documentation for the above 'General Specifications' and 'Optional Specifications' are available upon request to review, in addition to Installation Instructions and any requested material samples

Please contact SIP for technical assistance of nonstandard applications and pressures

Please refer to our web page www.sipindustries.com for up to date product data and technical advisories