



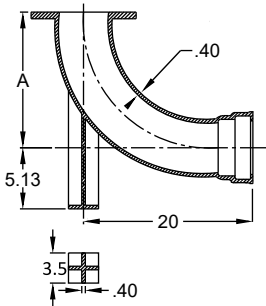
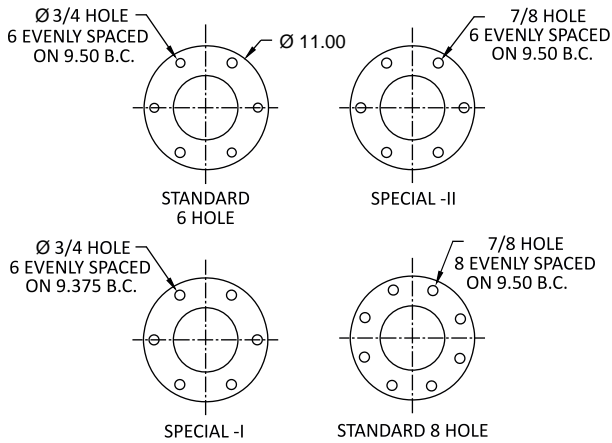
SIP Industries

Quality Manufacturers Since 1960

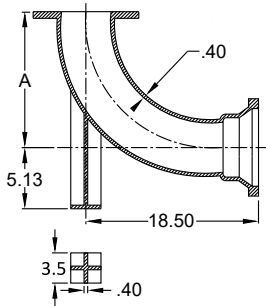
DUCTILE IRON LONG RADIUS HYDRANT BURIES

Submittal Information

Project Name / Location:	
Engineer:	
Referenced Specs:	
Distributor / Contractor:	



Push-On Long Radius Hydrant Bury



MJ Long Radius Hydrant Bury

Optional Specifications

Drill Pattern:	Standard 6 (6 Hole, ¾" Dia.)
	Special - I (6 Hole, ¾" Dia. - Los Angeles)
	Special - II (6 Hole, ¾" Dia. - San Diego)
	Standard 8 (8 Hole, ¾" Dia.)
Coating:	Asphaltic Seal Coat <i>In Accordance With ANSI/AWWA C104/A21.4</i>
	Fusion-Bonded Epoxy (FBE) Powder (Red Oxide Color) <i>In Accordance With ANSI/AWWA C116/A21.16</i>
	Other - Specify:
Lining:	Cement-Mortar - In Accordance With ANSI/AWWA C104/A21.4 Single Lined Double Lined Asphalt Coating No Asphalt Coating
	Fusion-Bonded Epoxy (FBE) Powder (Red Oxide Color) <i>In Accordance With ANSI/AWWA C116/A21.16</i>
	Other - Specify:
Bolts / Nuts:	Standard High Strength Low Alloy Steel (HSLA) <i>In Accordance With ANSI/AWWA C111/A21.11</i>
	Stainless Steel: Type 304 Type 316
	Other - Specify:
Gaskets:	Standard SBR (Buna-S) <i>In Accordance With ANSI/AWWA C111/A21.11</i>
	Other - Specify:

Technical Specifications

Select Size	Size	Type	A	Approx. Weight (LBS)
	6x16	MJ	16	84
	6x16	Push-On	16	88

General Specifications

Material	: Ductile Iron per ASTM A536
Pressure	: 350 PSI rating
Testing	: In accordance with ANSI/AWWA C153/A21.53 and UL, FM requirements
Laying Length	: As noted above
Push-On Joint :	TRIM TYTON® push-on bell joint design, manufactured by SIP Industries, under license from US Pipe TRIM TYTON® is a registered trademark of United States Pipe and Foundry Company, LLC. Note: Push-On End Ears are for installation purposes
Deflection	: 7° for MJ Bell, 5° for Push-On Bell
Flanges	: Flanged ends on fittings match ANSI/AWWA C115/A21.15 and ANSI B16.1 class 125 flanges In accordance with ANSI/AWWA C110/A21.10
Weight	: Are in pounds, unless noted otherwise and do not include accessories, cement lining and coating
Dimensions	: All dimensions are in inches, unless noted otherwise.
Installations	: Per ANSI/AWWA C600 and C111
Approvals	: UL Approved NSF/ANSI Standards 61 & 372

Supporting documentation for the above 'General Specifications' and 'Optional Specifications' are available upon request to review, in addition to Installation Instructions and any requested material samples

Please contact SIP for technical assistance of nonstandard applications

Please refer to our web page www.sipindustries.com for up to date product data and technical advisories



Certified to
NSF/ANSI 61 & 372

V 0524-01

8876 Gulf Freeway - Suite 500 - Houston, TX 77017 | Phone: 713-923-6111 | Fax: 713-923-6114 | www.sipindustries.com | sales@sipindustries.com