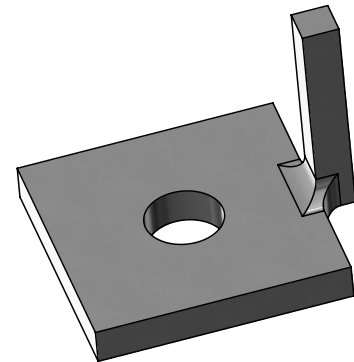




## LUG WASHER

**Lug Washers** are designed to be used as anti-rotation collars for rods or bolts used to strain devices, pipes or fittings.



### General Specifications

---

<b>Material</b>	:	Gray Cast Iron ASTM 48
<b>Sizes</b>	:	Lug Washer is designed for 3/4" and 1" Bolts or Rods.
<b>Installation</b>	:	Rods or Bolt pass through hole and secure to the Socket Clamps, Riser Clamps, Re-tainer Clamps or Friction Clamps. A flat washer should still be used between the Lug Washer and nut.