



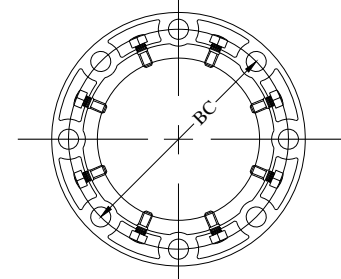
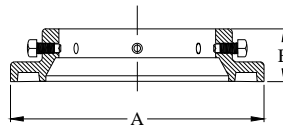
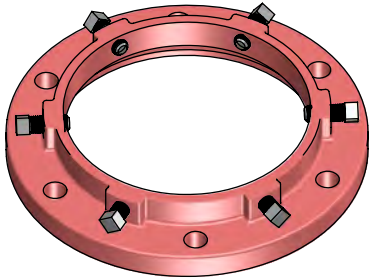
FLANGE ADAPTER FOR STEEL OR DUCTILE IRON PIPE

Submittal Information

Project Name / Location:	
Engineer:	
Referenced Specs:	
Distributor / Contractor:	

Optional Specifications

Coating:	Standard Alkyd, Direct To Metal (DTM) Enamel (Red)
	Other - Specify:
Bolts / Nuts:	Standard Carbon Steel: Type A307
	Stainless Steel: Type 304 Type 316
	Other - Specify:
Gaskets:	Standard SBR (Buna-S) In Accordance With ANSI/AWWA C111/A21.11
	Other - Specify:



General Specifications

M	:	Ductile Iron per ASTM A536 Grade 65-45-12
P	:	Standard Flange Adapter : 200 psi for 3"- 8" sizes and 175 psi for 10"- 12" sizes Heavy Duty Flange Adapter : 250 psi for 4"- 12", 150 psi for 14"- 24" & 100 psi for 30" - 36"
B H D	:	In accordance with ANSI B16.1 Class 125
F -	:	In accordance with ANSI Class 125/150 & ANSI/AWWA C115/A21.15
A D	:	In accordance with ANSI/AWWA C111/A21.11, C110/A21.10 & C153/A21.53
S o	:	ANSI 4140 steel, Heat Treated
Approvals	:	Standard Adapter: 3"-12" FM Approved Heavy Duty Adapter: 4"-24" FM Approved



Technical Specification

STANDARD FLANGE ADAPTERS

Select Size	Series Number	Size	OD Pipe Thread		A	B	BC	Bolt Hole	Set Screw		Weight
			Ductile Pipe	Steel**					Qty.	Size	
	FAR03	3	3.96	3.50	7.50	2.00	6.00	3/8	4	1/2 x 1 1/4	6
	FAR04	4	4.80	4.50	9.00	2.07	7.50	3/8	4	1/2 x 1 1/4	9
	FAR06	6	6.90	6.63	11.00	2.19	9.50	7/8	8	1/2 x 1 1/4	12
	FAR08	8	9.05	8.63	13.50	2.31	11.75	7/8	8	3/4 x 1 1/2	19
	FAR10	10	11.10	10.75	16.00	2.50	14.25	1	12	5/8 x 1 1/2	27
	FAR12	12	13.20	12.75	19.00	2.50	17.00	1	12	5/8 x 1 1/2	37

Technical Specification

HEAVY DUTY FLANGE ADAPTERS

Select Size	Series Number	Size	OD Pipe Thread		A	B	BC	Bolt Hole	Set Screw		Weight
			Ductile Pipe	Steel**					Qty.	Size	
	FAH03	3	3.96	3.50	7.50	2.00	6.00	3/8	4	1/2 x 1 1/4	9
	FAH04	4	4.80	4.50	9.00	2.07	7.50	3/8	4	1/2 x 1 1/4	11
	FAH06	6	6.90	6.63	11.00	2.19	9.50	7/8	8	1/2 x 1 1/4	18
	FAH08	8	9.05	8.63	13.50	2.31	11.75	7/8	8	3/4 x 1 1/2	26
	FAH10	10	11.10	10.75	16.00	2.50	14.25	1	12	5/8 x 1 1/2	35
	FAH12	12	13.20	12.75	19.00	2.50	17.00	1	12	5/8 x 1 1/2	53
	FAH14	14	15.30	N/A	21.00	2.75	18.75	1 1/8	12	5/8 x 1 1/2	70
	FAH16	16	17.40	N/A	23.50	2.75	21.25	1 1/8	16	5/8 x 1 1/2	78
	FAH18	18	19.50	N/A	25.00	3.25	22.75	1 1/8	16	3/4 x 2	95
	FAH20	20	21.60	N/A	27.50	3.25	25.00	1 1/8	20	3/4 x 2	140
	FAH24	24	25.80	N/A	32.00	3.69	29.50	1 1/8	20	3/4 x 2	210
	FAH30	30	32.00	N/A	38.75	4.25	36.00	1 1/8	28	1 x 2 1/4	300
	FAH36	36	38.3	N/A	46.00	4.38	42.75	1 1/8	32	1 x 2 1/4	400
	FAH42	42	44.5	N/A	53.00	4.50	49.5	1 1/8	36	1 x 2 1/4	510
	FAH48	48	50.8	N/A	59.50	5.13	56	1 1/8	44	1 x 2 1/4	675

*This Restraint Product is not for use on Plastic Pipe.

**Steel Pipe must be SCH 40 or Higher.

Please refer to our web page www.sipindustries.com for up to date product data and technical advisories

V 0524-01