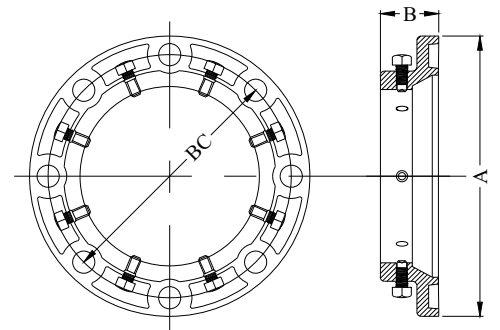


STANDARD FLANGE ADAPTER (for Steel or Ductile Iron Pipe)
General Specifications

- Material** : Ductile Iron per ASTM A536 Grade 65-45-12
- Pressure** : 200 PSI for 3"- 8" sizes and 175 PSI for 10"- 12" sizes
- Bolt Hole Drilling** : In accordance with ANSI B16.1 Class 125
- Flange Ends** : In accordance with ANSI Class 125/150 & ANSI/AWWA C115/A21.15
- Applicable Dimensions** : In accordance with ANSI/AWWA C111/A21.11, C110/A21.10 & C153/A21.53
- Used On** : Ductile Iron (PC350) or Steel (SCH40) Pipe
- Coating** : Standard gland color (Coral Red - RAL 3016)
- Gaskets** : SBR in accordance with ANSI/AWWA C111/A21.11
- Set Screws** : ANSI 4140 Steel, Heat Treated and Zinc Plated
- Approvals** : 3" - 12" FM APPROVED | UL/NSF Standards 61


Technical Specifications

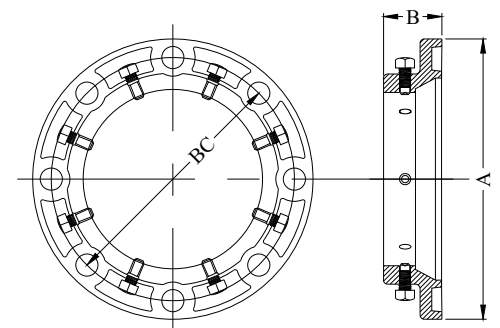
NOM. SIZE	OD PIPE THREAD		A	B	BC	BOLT HOLE DIA	SET SCREWS		WT. (LBS.)
	DI PIPE	STEEL PIPE					QTY.	SIZE	
3	3.96	3.50	7.50	2.00	6.00	3/4	4	1/2 X 1 1/4	6
4	4.80	4.50	9.00	2.07	7.50	3/4	4	1/2 X 1 1/4	9
6	6.90	6.63	11.00	2.19	9.50	7/8	8	1/2 X 1 1/4	12
8	9.05	8.63	13.50	2.31	11.75	7/8	8	5/8 X 1 1/2	19
10	11.10	10.75	16.00	2.50	14.25	1	12	5/8 X 1 1/2	27
12	13.20	12.75	19.00	2.50	17.00	1	12	5/8 X 1 1/2	37


HEAVY DUTY FLANGE ADAPTER (for Steel or Ductile Iron Pipe)
General Specifications

- Material** : Ductile Iron per ASTM A536 Grade 65-45-12
- Pressure** : 250 PSI for 3"- 12" sizes, 150 PSI for 14"- 24" sizes and 100 PSI for 30"- 42" sizes
- Bolt Hole Drilling** : In accordance with ANSI B16.1 Class 125
- Flange Ends** : In accordance with ANSI Class 125/150 & ANSI/AWWA C115/A21.15
- Applicable Dimensions** : In accordance with ANSI/AWWA C111/A21.11, C110/A21.10 & C153/A21.53
- Used On** : Ductile Iron (PC350) or Steel (SCH40) Pipe
- Coating** : Standard gland color (Coral Red - RAL 3016)
- Gaskets** : SBR in accordance with ANSI/AWWA C111/A21.11
- Set Screws** : ANSI 4140 Steel, Heat Treated and Zinc Plated
- Approvals** : 4" - 24" FM APPROVED | UL/NSF Standards 61


Technical Specifications

NOM. SIZE	OD PIPE THREAD		A	B	BC	BOLT HOLE DIA	SET SCREWS		WT. (LBS.)
	DI PIPE	STEEL PIPE					QTY.	SIZE	
3	3.96	3.50	7.50	2.00	6.00	3/4	4	1/2 X 1 1/4	6
4	4.80	4.50	9.00	2.07	7.50	3/4	4	1/2 X 1 1/4	9
6	6.90	6.63	11.00	2.19	9.50	7/8	8	1/2 X 1 1/4	11
8	9.05	8.63	13.50	2.31	11.75	7/8	8	5/8 X 1 1/2	18
10	11.10	10.75	16.00	2.50	14.25	1	12	5/8 X 1 1/2	26
12	13.20	12.75	19.00	2.50	17.00	1	12	5/8 X 1 1/2	35
14	15.30	----	21.00	2.75	18.75	1 1/8	12	5/8 X 1 1/2	53
16	17.40	----	23.50	2.75	21.25	1 1/8	16	5/8 X 1 1/2	70
18	19.50	----	25.00	3.25	22.75	1 1/4	16	3/4 X 2	78
20	21.60	----	27.50	3.25	25.00	1 1/4	20	3/4 X 2	95
24	25.80	----	32.00	3.69	29.50	1 3/8	20	3/4 X 2	133
30	32.00	----	38.75	4.25	36.00	1 3/8	28	1 X 2 1/4	210
36	38.30	----	46.00	4.38	42.75	1 5/8	32	1 X 2 1/4	300
42	44.50	----	53.00	4.50	49.50	1 5/8	36	1 X 3	443



V 0524-01

All dimensions are in inches, unless otherwise stated.

RECOMMENDED TORQUE VALUES (Set Screws)

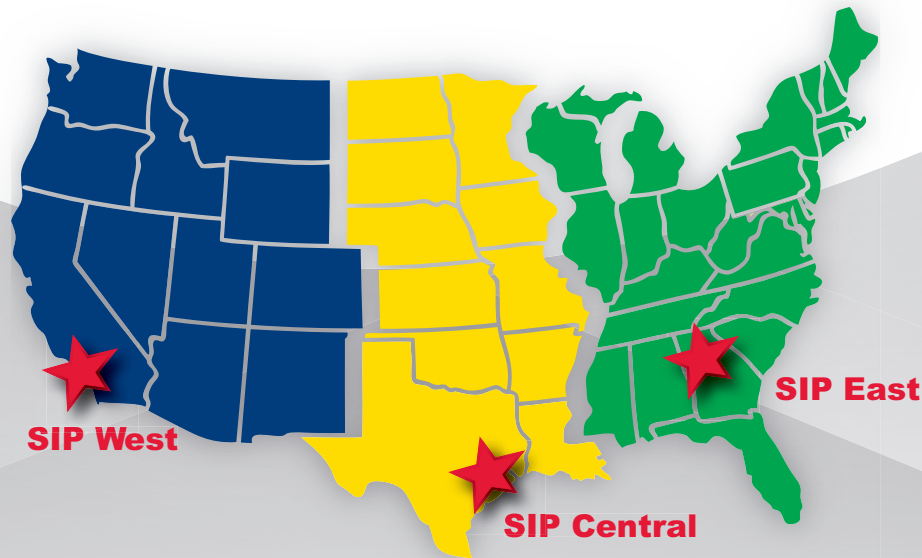
FLANGE SIZE	SET SCREW SIZE	RECOMMENDED SET SCREW TORQUE VALUES (FT-LBS)							
		DUCTILE IRON PIPE CLASS				STEEL PIPE SCHEDULE			
		50	51	52	PC350	10	20	30	40+
3"	1/2" x 1 1/4"	-	50	70	50	30	-	-	70
4"	1/2" x 1 1/4"	-	50	70	50	30	-	-	70
6"	1/2" x 1 1/4"	50	60	80	50	30	-	-	90
8"	5/8" x 1 1/2"	75	75	80	75	30	50	50	90
10"	5/8" x 1 1/2"	75	75	80	75	40	50	50	90
12"	5/8" x 1 1/2"	75	75	80	75	40	50	60	90
14"	5/8" x 1 1/2"	75	75	90	75	N/A	N/A	N/A	N/A
16"	5/8" x 1 1/2"	75	75	90	75	N/A	N/A	N/A	N/A
18"	3/4" x 2"	75	80	115	75	N/A	N/A	N/A	N/A
20"	3/4" x 2"	75	80	115	75	N/A	N/A	N/A	N/A
24"	3/4" x 2"	75	80	115	80	N/A	N/A	N/A	N/A
30"	1" x 2 1/4"	90	110	125	125	N/A	N/A	N/A	N/A
36"	1" x 2 1/4"	90	110	125	125	N/A	N/A	N/A	N/A

All dimensions are in inches, unless otherwise stated.



SIP Industries

Quality Manufacturers Since 1960



PRODUCT LINE

AWWA DI Fittings & Accessories

- C153 Compact MJ Fittings and Acc. 2" - 64"
- C110 Full Body MJ Fittings 2" - 64"
- C153 Trim Tyton® Push-On Fittings 4" - 24"
- C110 Flange Fittings 2" - 64"
- MJ x MJ Adapter for Connecting MJ Bells 3" - 24"
- Stainless Steel & Blue T-Bolts
- Made in India, China & Mexico
- Bare, Cement, Zinc, FBE & Other Linings

Joint Restraint System

- EZD Joint Restraint for DI Pipe 3" - 48"
- EZDTP Joint Restraint Tandem for DI Pipe 3" - 48"
- EZDPTP Joint Restraint for Push-On Joints DI Pipe 3" - 48"
- Ductile Iron Retainer Glands 3" - 30"
- FAR / FAH Flange Adapter for DI Pipe 3" - 48"
- EZFA Restrained Flange Adapter for DI and PVC Pipe 3" - 36"
- EZPVC Joint Restraint for PVC Pipe 3" - 36"
- ULTRA Joint Restraint for PVC Pipe 4" - 12"
- EZPVCPTP Joint Restraint for Push-On Joints PVC Pipe 14" - 36"
- PTPVC Pipe to Pipe Restraint 4" - 48"
- PTPDF Pipe to MJ Fittings Restraint 4" - 48"
- PTPFC Pipe to PVC Fittings Restraint 4" - 12"
- Made in China & USA
- EZ Shield or Shop Coating

Municipal Construction Castings

- Manhole Rings and Cover
- Frames and Grates
- Valve Boxes and Service Boxes
- Water Meter Covers and Boxes
- Cleanout and Monument Boxes
- Detectable Warning Plates
- Extension Rings
- Trench Grates and Tree Grates
- Made in India & USA

Fabrication Products for DI Pipe

- High Hub Flanges Class 150 and 250. 3" - 64"
- Threaded Bell Flanges 3" - 48"
- Anchor Flanges 3" - 60"
- Filler Flanges 4" - 30"

Other Products and Services

- All Thread Rod
- Pipe Lube and Hydraulic Cement
- Socket Clamps and Lugs
- Flange Packs
- OEM Castings



SIP INDUSTRIES
SERAMPORE
SINCE 1960

SIP CORPORATE 8876 Gulf Freeway, Suite 500, Houston, TX 77017

SIP CENTRAL 2900 Patio Drive, Houston, TX 77017

SIP EAST 600 Rayloc Drive, Atlanta, GA 30336

SIP WEST 8333 Almeria Avenue, Fontana, CA 92335

Phone: 877-921-6111 or 713-923-6111 | Fax: 713-923-6114 | www.sipindustries.com | sales@sipindustries.com