



SIP Industries

Quality Manufacturers Since 1960



Canadian Valve Box & Service Box

V 0524-01

www.sipindustries.com

Toll Free 877-921-6111



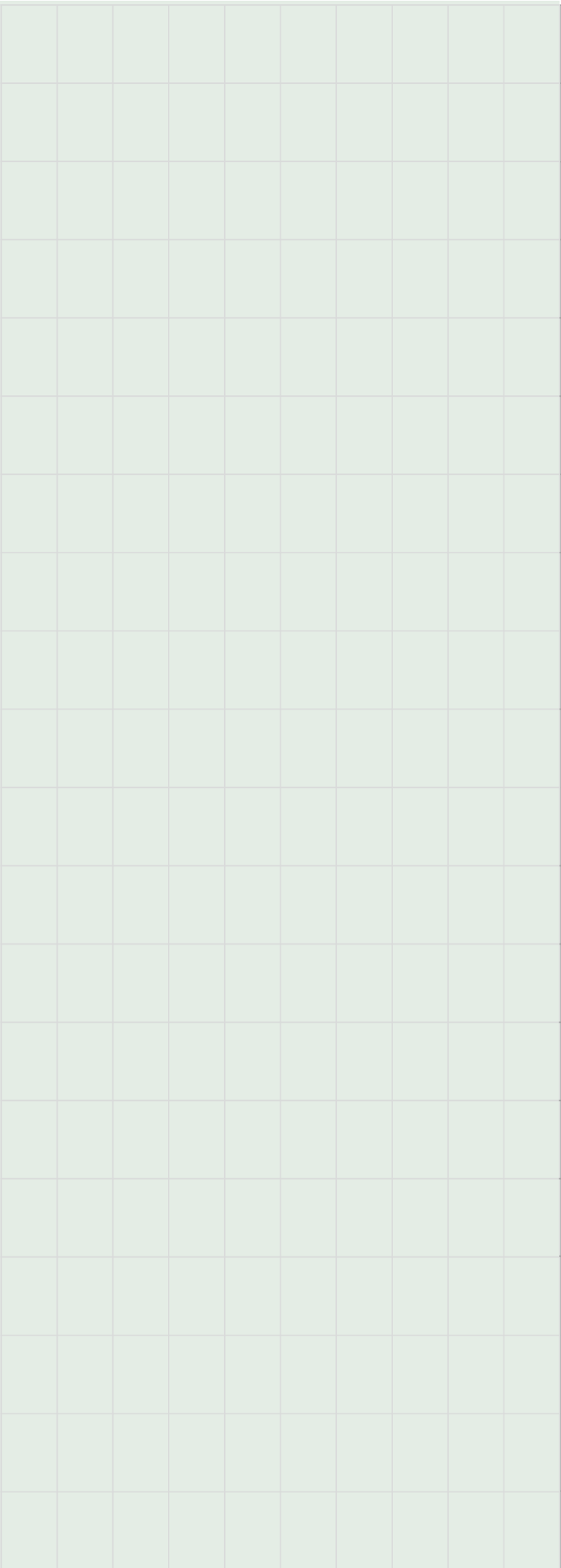
SIP INDUSTRIES
SERAMPORE
SINCE 1960

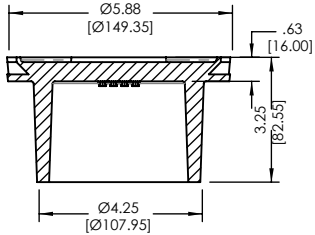
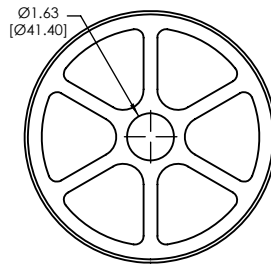
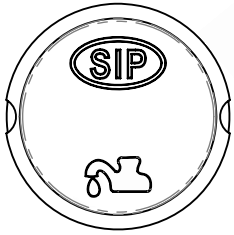
TABLE OF CONTENTS

<u>ITEM #</u>	<u>DESCRIPTION</u>	<u>PAGE #</u>
CN5600	4 1/4" REGULER STYLE SLIDE VALVE BOX	Page : CVB 3
CN5601	4 1/4" DEEP STYLE SLIDE VALVE BOX	Page : CVB 4
CN5602	FLOATING EXTENSION W/ COVER	Page : CVB 5
CN5603	OPTIONAL COVER FOR 4 1/4" REGULER STYLE SLIDE VBX	Page : CVB 5
CN5604	OPTIONAL RISER FOR 4 1/4" REGULER STYLE SLIDE VBX	Page : CVB 5
CN5605	5 1/4" REGULER STYLE SLIDE VALVE BOX	Page : CVB 6
CN5606	5 1/4" DEEP STYLE SLIDE VALVE BOX	Page : CVB 7
CN5607	FLOATING EXTENSION W/ COVER	Page : CVB 8
CN5608	OPTIONAL RISER FOR 5 1/4" REGULER STYLE SLIDE VBX	Page : CVB 8
CN5700	EQ. SB#D1 SERVICE BOX	Page : CVB 9
CN5701	EQ. SB#D1 OT SERVICE BOX	Page : CVB 10
CN5702	EQ. SB#D2 SERVICE BOX	Page : CVB 11
CN5703	EQ. SB#D2 OT SERVICE BOX	Page : CVB 12
CN5704	SS 304 ROD W/ COTTER PIN	Page : CVB 13

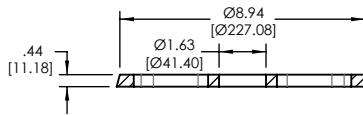
- All dimensions are in inches unless noted otherwise.
- All weights are approximate in pounds unless noted otherwise.

GENERAL NOTES

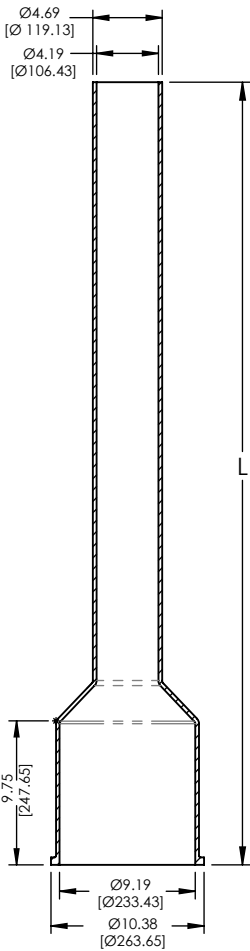
	



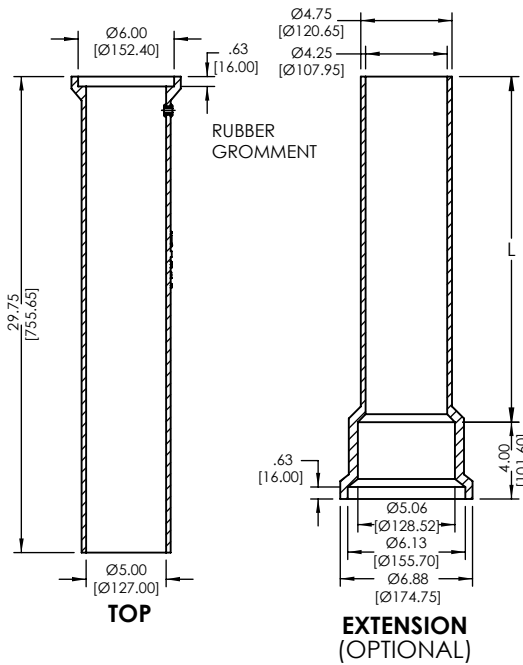
LID



GUIDE PLATE



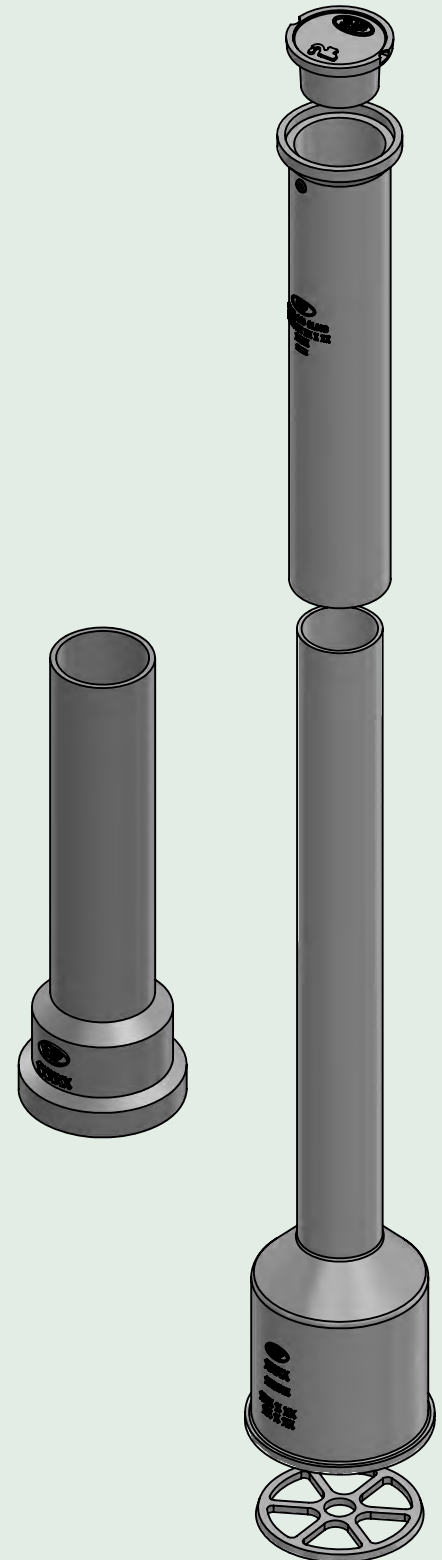
BELL BOTTOM



TOP

EXTENSION (OPTIONAL)

SIP Item #	Description	Weights (LBS/KG)
CN5600L	Lid	8 [3.63]
CN5600T	Top	28 [12.70]
CN5600B36	36" Bell Bottom	50 [22.68]
CN5600B53	53" Bell Bottom	65 [29.49]
CN5600B62	61.75" Bell Bottom	75 [34.02]
CN5600GP	Guide Plate	3 [1.36]
CN5600-12	12" Extension	20 [9.08]
CN5600-18	18" Extension	29 [13.16]
CN5600-24	24" Extension	33 [14.97]

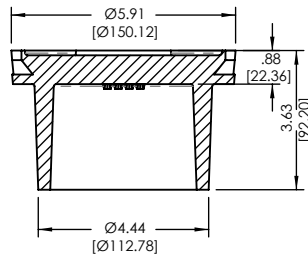
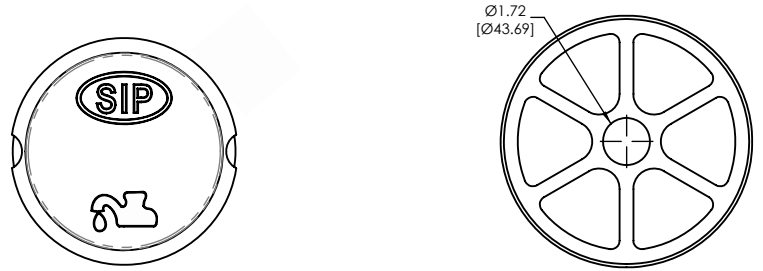
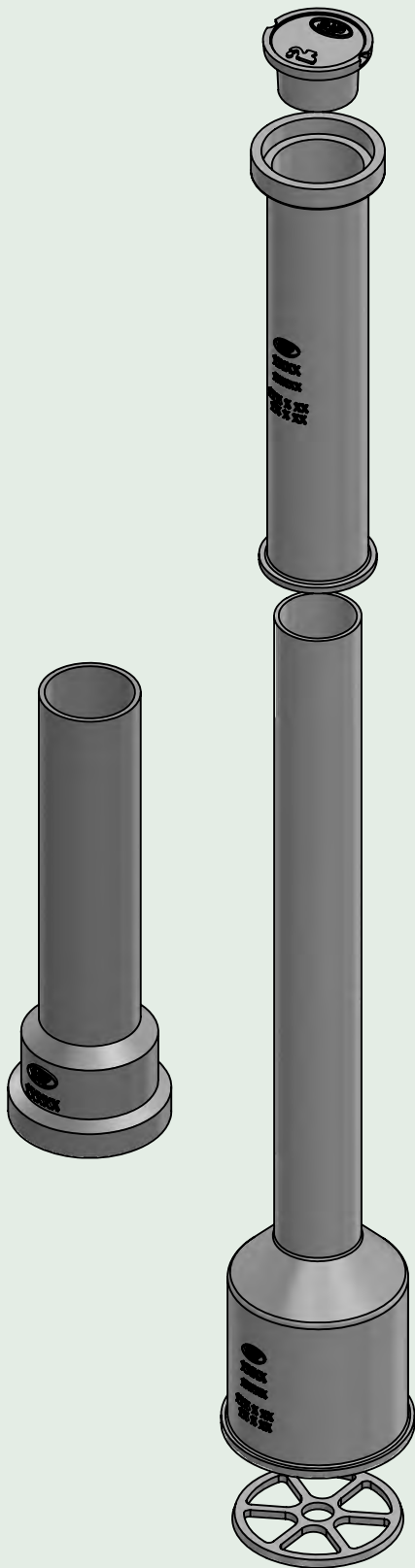


Material : Cast Iron ASTM A48 Class 30B
 Dimensions : All are in Inch, [] = MM

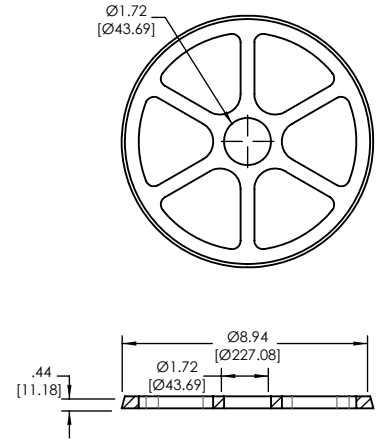


ITEM # : CN5601

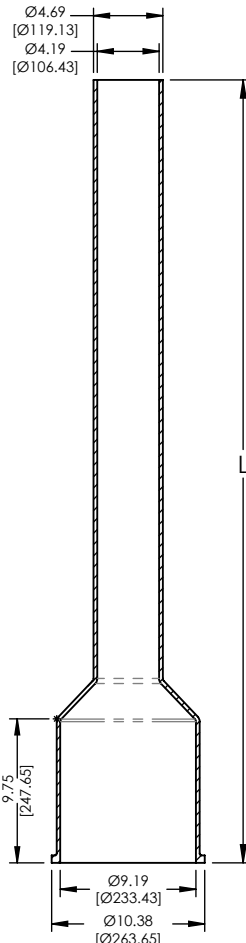
4 1/4 " DEEP STYLE SLIDE VALVE BOX



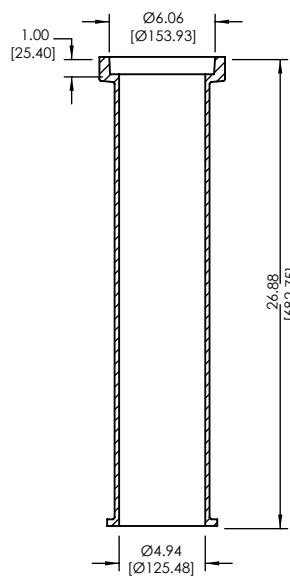
LID



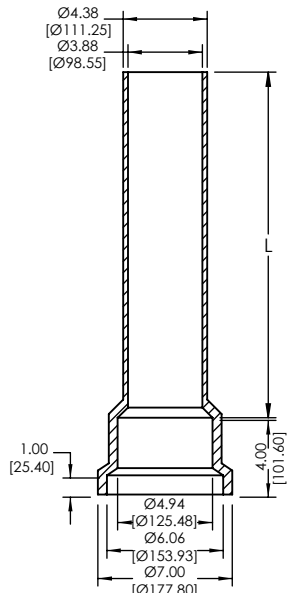
GUIDE PLATE



BELL BOTTOM



TOP/BOTTOM FLANGE



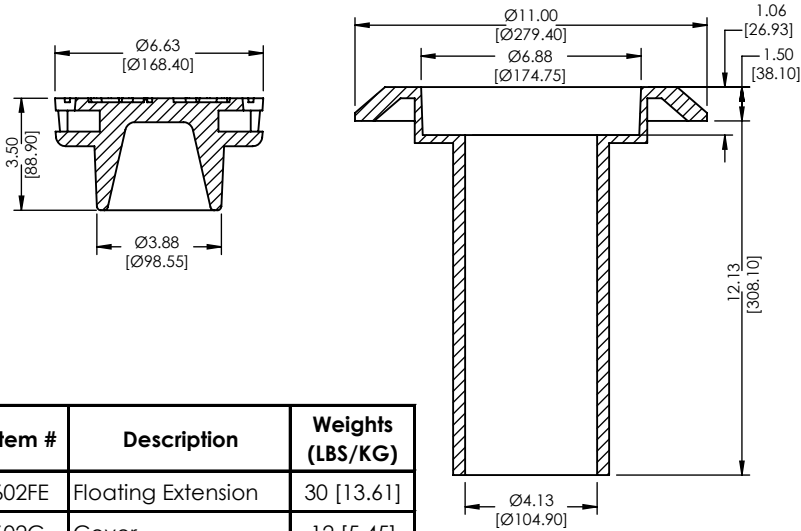
EXTENSION (OPTIONAL)

SIP Item #	Description	Weights (LBS/KG)
CN5601L	Lid	9 [4.09]
CN5601T	Top / Bottom Flange	38 [17.24]
CN5600B36	36" Bell Bottom	50 [22.68]
CN5600B53	53" Bell Bottom	65 [29.49]
CN5600B62	61.75" Bell Bottom	75 [34.02]
CN5601GP	Guide Plate	3 [1.36]
CN5601-12	12" Extension	20 [9.08]
CN5601-18	18" Extension	21 [9.53]
CN5601-24	24" Extension	25 [11.34]
CN5601-36	36" Extension	35 [15.88]
CN5601-48	48" Extension	45 [20.42]
CN5601-60	60" Extension	50 [22.68]

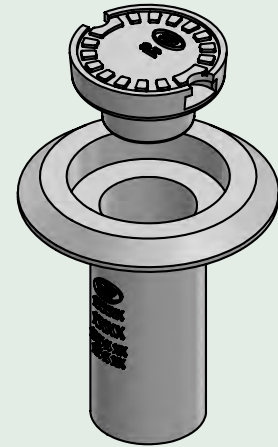
Material : Cast Iron ASTM A48 Class 30B
 Dimensions : All are in Inch, [] = MM

FLOATING EXTENSION W/ COVER

ITEM # : CN5602



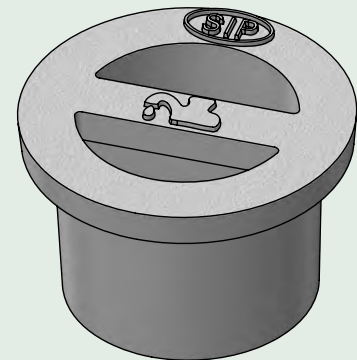
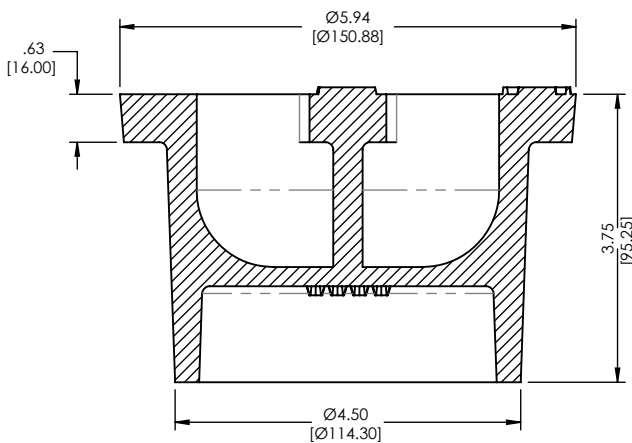
SIP Item #	Description	Weights (LBS/KG)
CN5602FE	Floating Extension	30 [13.61]
CN5602C	Cover	12 [5.45]



Material : Cast Iron ASTM A48 Class 30B
 Dimensions : All are in Inch, [] = MM

OPTIONAL COVER FOR 4 1/4" REGULER STYLE SLIDE VBX

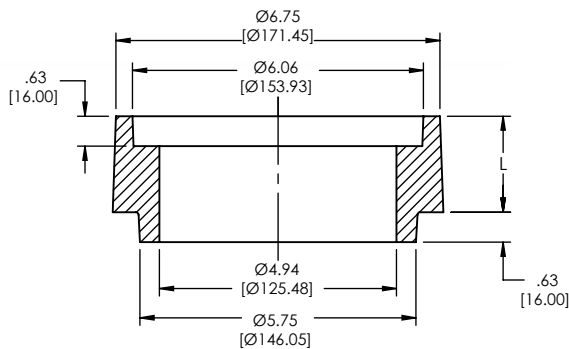
ITEM # : CN5603



Material : Cast Iron ASTM A48 Class 30B
 Dimensions : All are in Inch, [] = MM

OPTIONAL RISER FOR 4 1/4" REGULER STYLE SLIDE VBX

ITEM # : CN5604



SIP Item #	Description	Weights (LBS/KG)
CN5604-1.38	1.38 Inch Riser	5 [2.27]
CN5604-2	2 Inch Riser	7 [3.18]
CN5604-3	3 Inch Riser	13 [5.90]

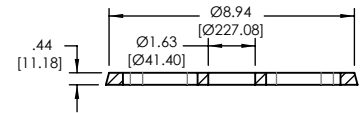
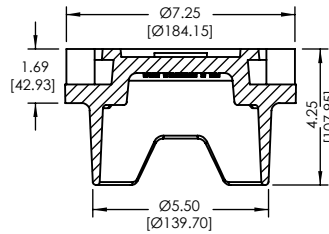
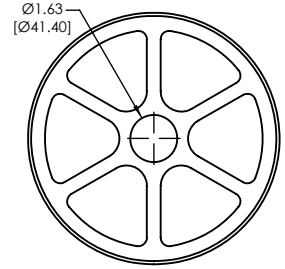
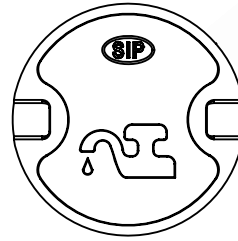
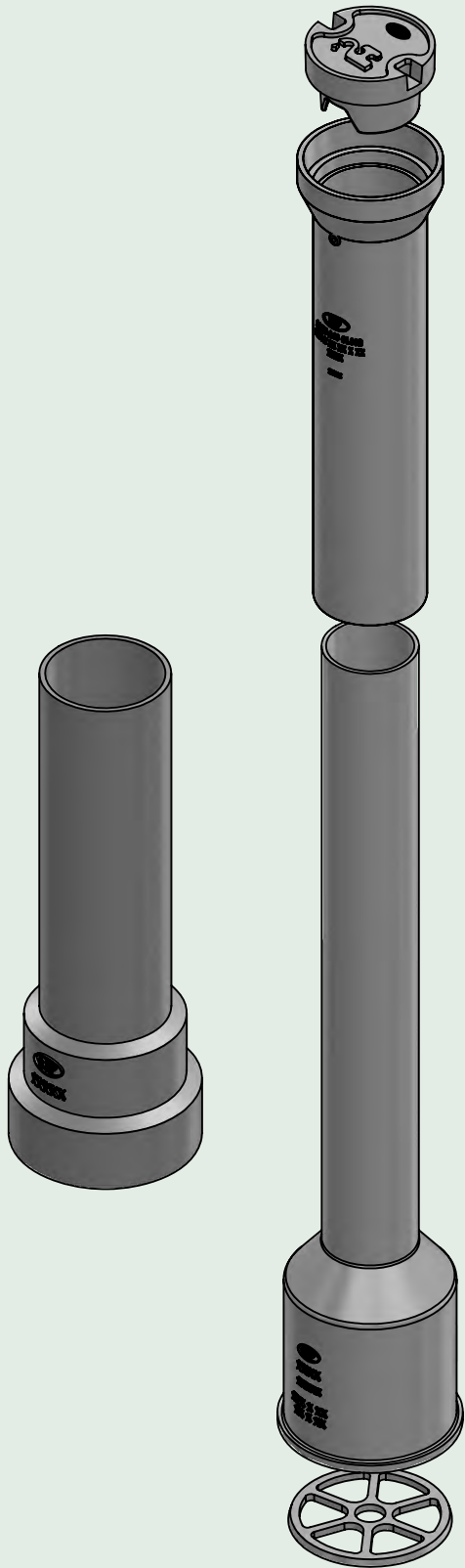


Material : Cast Iron ASTM A48 Class 30B
 Dimensions : All are in Inch, [] = MM



ITEM # : CN5605

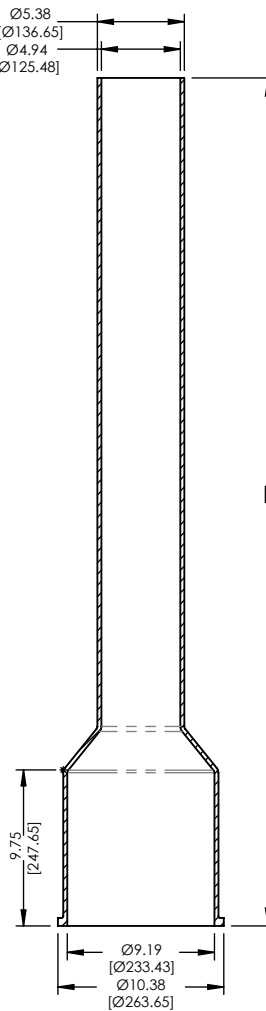
5 1/4 " REGULER STYLE SLIDE VALVE BOX



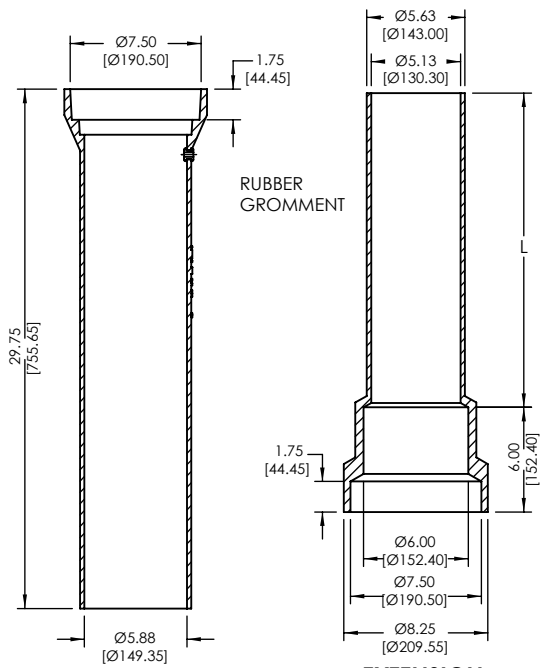
GUIDE PLATE

LID

Ø5.38 [Ø136.65]
Ø4.94 [Ø125.48]



BELL BOTTOM



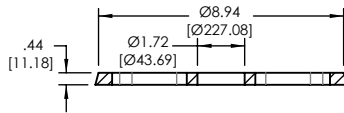
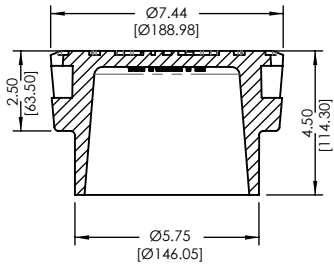
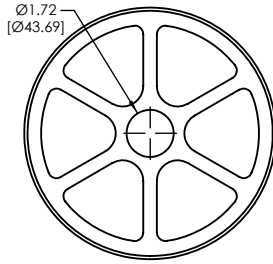
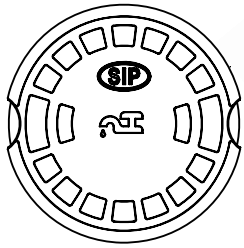
RUBBER GROMMET

TOP

EXTENSION (OPTIONAL)

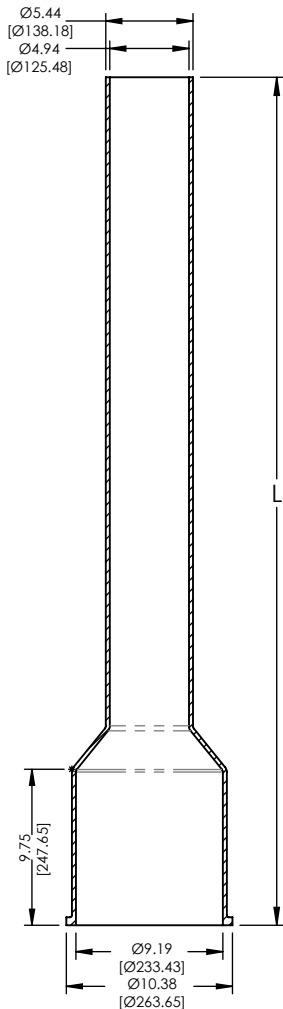
SIP Item #	Description	Weights (LBS/KG)
CN5605L	Lid	17 [7.72]
CN5605T	Top	37 [16.79]
CN5605B36	36" Bell Bottom	69 [31.30]
CN5605B53	53" Bell Bottom	75 [34.02]
CN5605B62	61.75" Bell Bottom	90 [40.83]
CN5600GP	Guide Plate	3 [1.36]
CN5605-12	12" Extension	28 [12.70]
CN5605-18	18" Extension	34 [15.43]
CN5605-24	24" Extension	43 [19.51]

Material : Cast Iron ASTM A48 Class 30B
Dimensions : All are in Inch, [] = MM

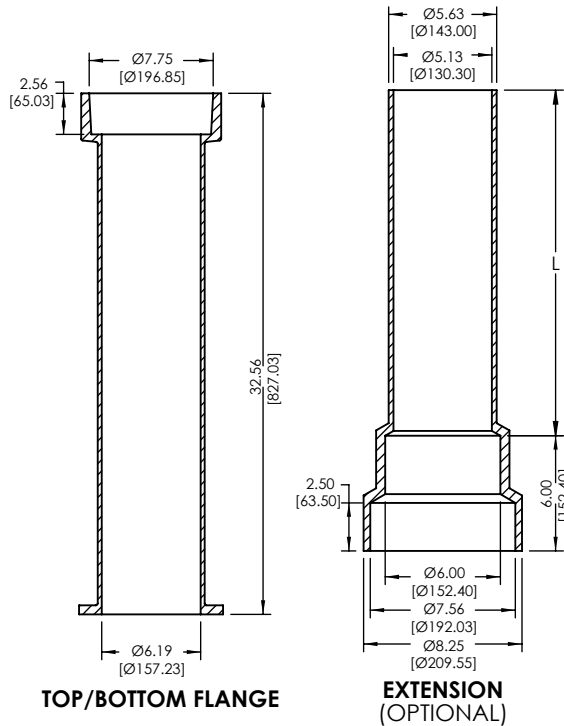


GUIDE PLATE

LID



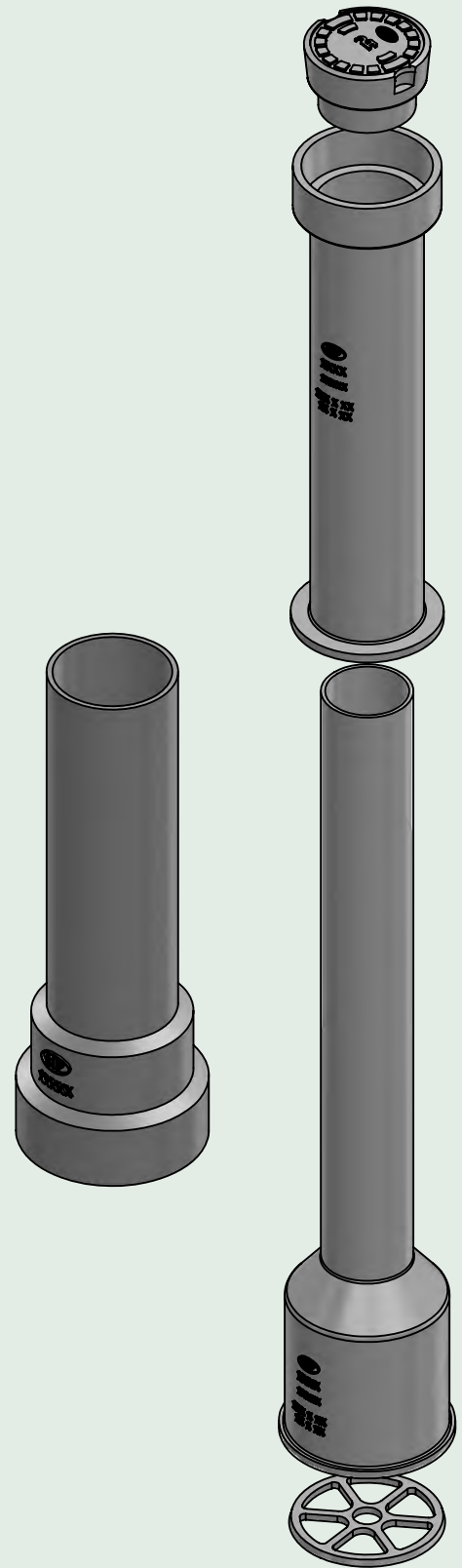
BELL BOTTOM



TOP/BOTTOM FLANGE

EXTENSION (OPTIONAL)

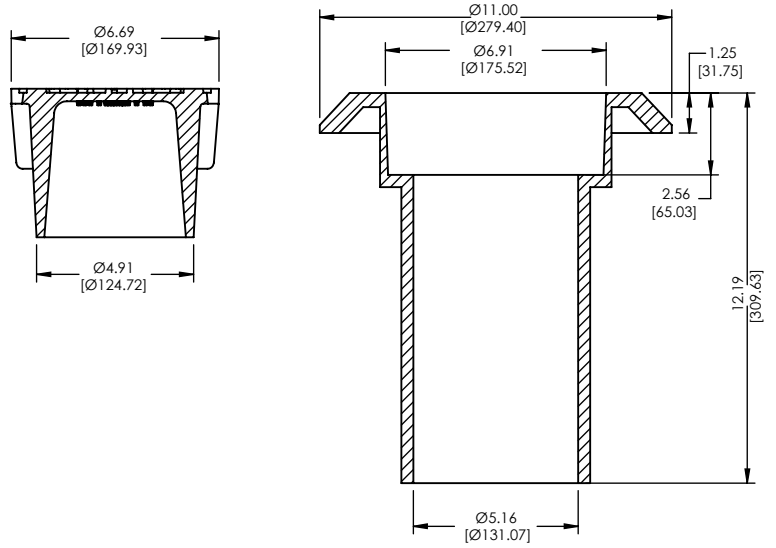
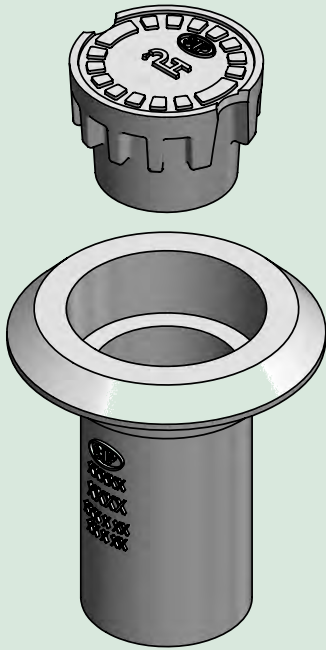
SIP Item #	Description	Weights (LBS/KG)
CN5606L	Lid	20 [9.08]
CN5606T	Top / Bottom Flange	59 [26.77]
CN5606B36	36" Bell Bottom	69 [31.30]
CN5606B53	53" Bell Bottom	75 [34.02]
CN5606B62	61.75" Bell Bottom	90 [40.83]
CN5601GP	Guide Plate	3 [1.36]
CN5606-12	12" Extension	29 [13.16]
CN5606-18	18" Extension	35 [15.88]
CN5606-24	24" Extension	43 [19.51]



Material : Cast Iron ASTM A48 Class 30B
 Dimensions : All are in Inch, [] = MM

ITEM # : CN5607

FLOATING EXTENSION W/ COVER

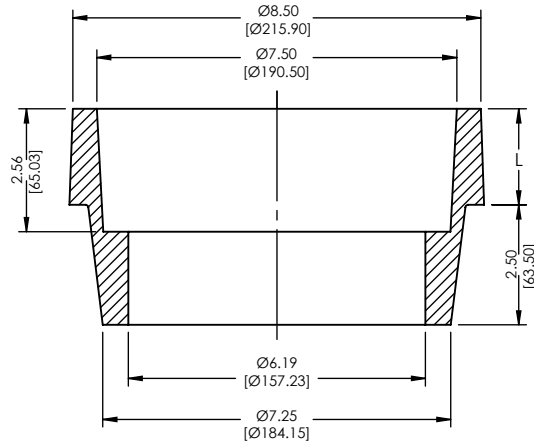
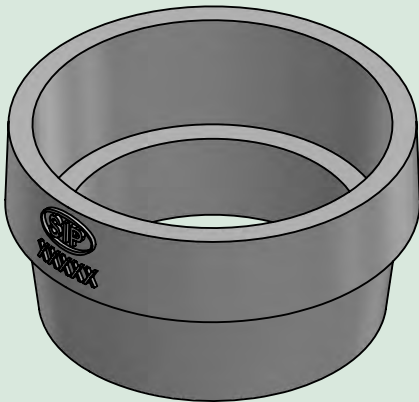


SIP Item #	Description	Weights (LBS/KG)
CN5607FE	Floating Extension	28 [12.70]
CN5607C	Cover	15.30 [6.94]

Material : Cast Iron ASTM A48 Class 30B
 Dimensions : All are in Inch, [] = MM

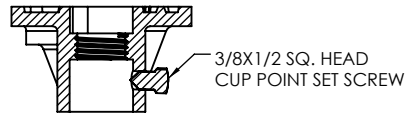
ITEM # : CN5608

OPTIONAL RISER FOR 5¼" REGULER STYLE SLIDE VBX



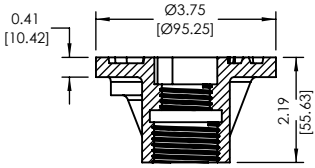
SIP Item #	Description	Weights (LBS/KG)
CN5608-1.50	1.50 Inch Riser	10 [4.54]
CN5608-2	2 Inch Riser	13 [5.90]
CN5608-3	3 Inch Riser	21 [9.53]

Material : Cast Iron ASTM A48 Class 30B
 Dimensions : All are in Inch, [] = MM

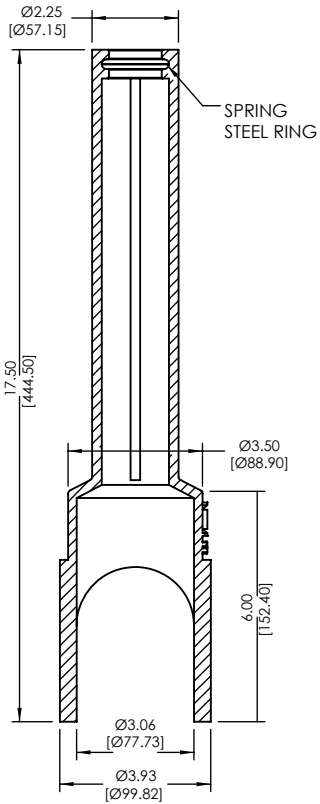


REPAIR LID
LID DIMENSIONS
ARE THE SAME

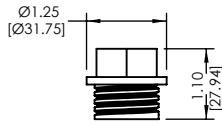
(SOLD SEPERATELY)



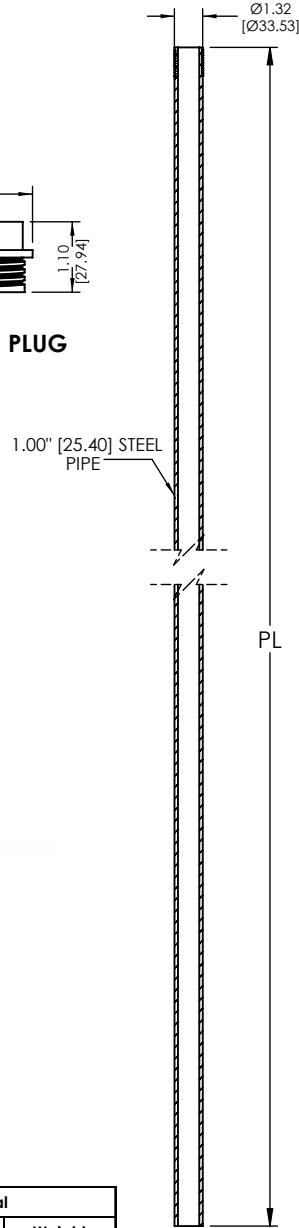
LID



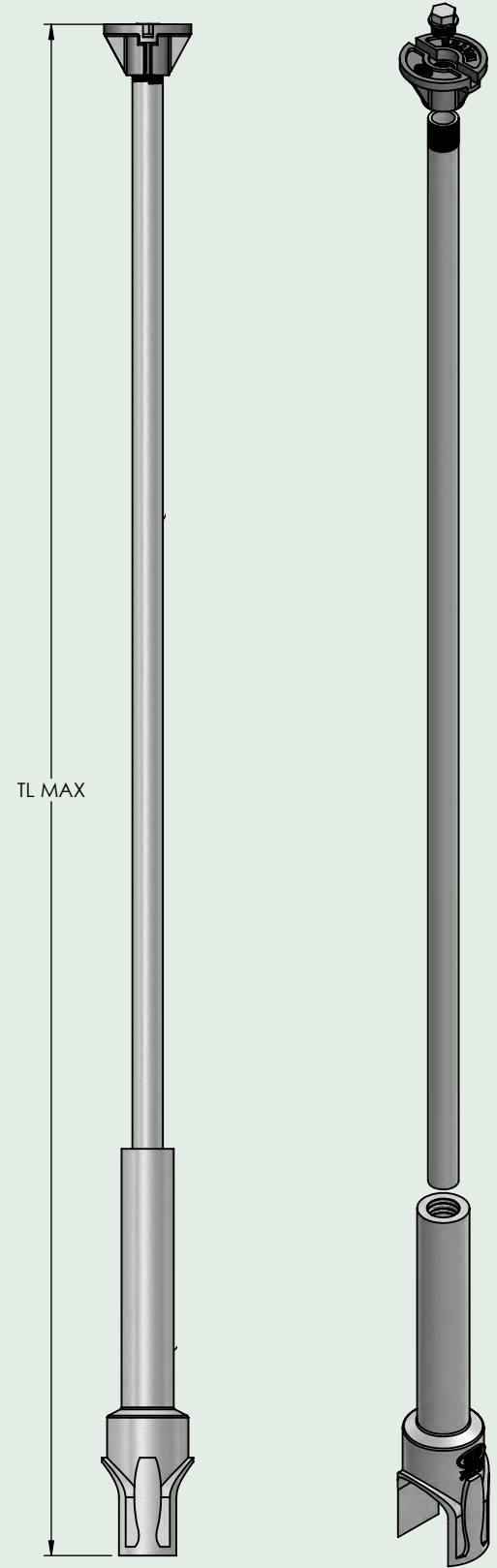
BASE



BRASS PLUG



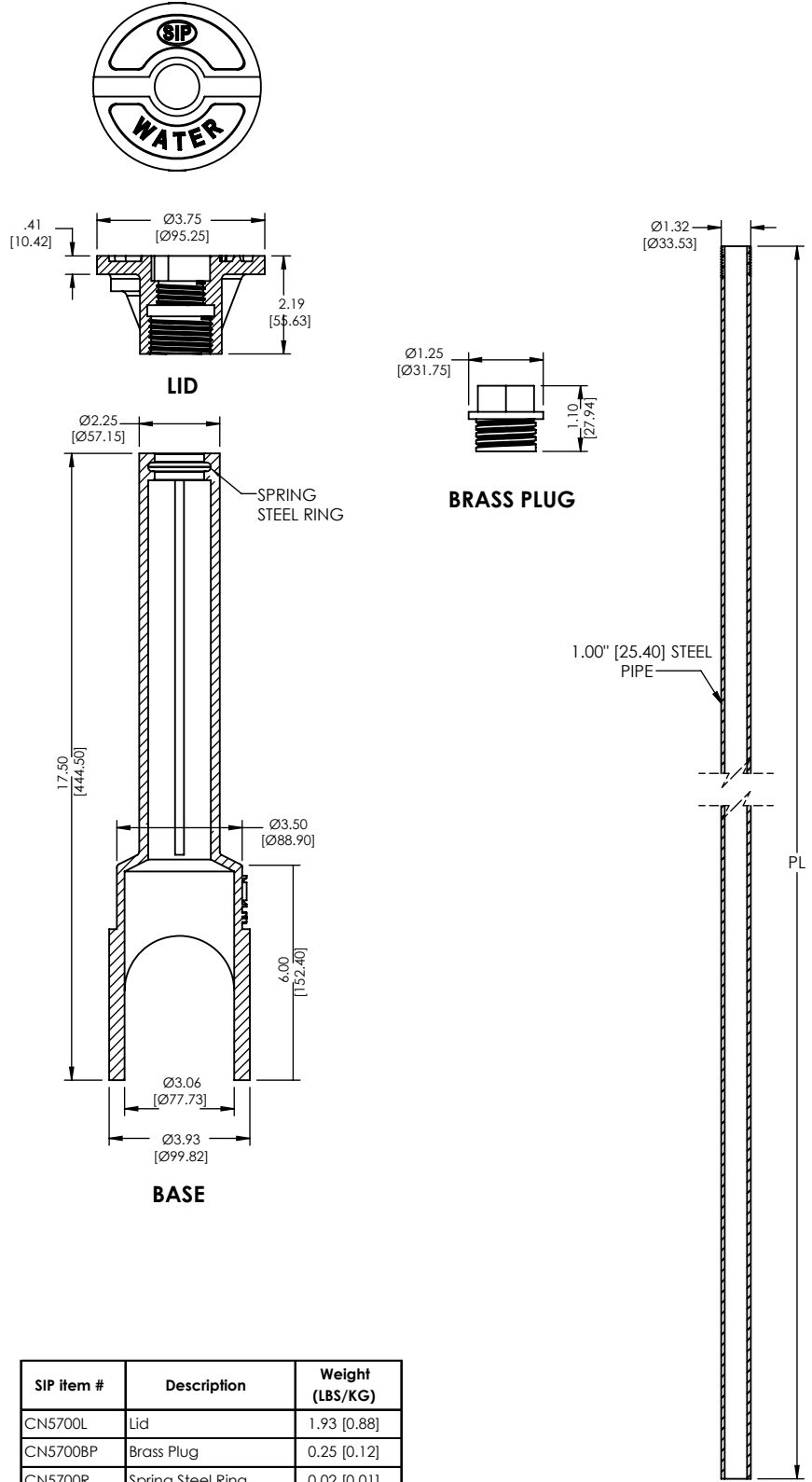
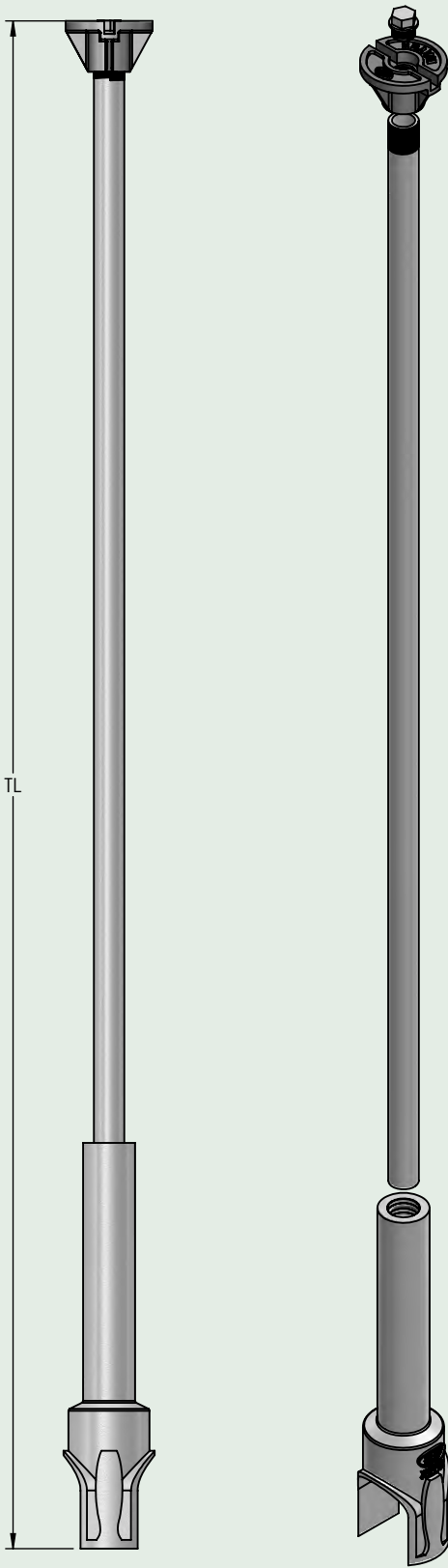
**STEEL PIPE
SCH. 40**



SIP Item #	Description	Weight (LBS/KG)
CN5700L	Lid	1.93 [0.88]
CN5700BP	Brass Plug	0.25 [0.12]
CN5700R	Spring Steel Ring	0.02 [0.01]
CN5700B	Base	7.76 [3.52]
CN5700RL	Repair Lid	2.13 [0.97]
	SQ. Head Set Screw	0.03 [0.02]

SIP Item #	Steel Pipe		Total	
	PL	Weight (LBS/KG)	TL Max.	Weight (LBS/KG)
CN5700-7D1	49.63 [1260.30]	5.87 [2.67]	66.13 [1679.70]	15.83 [7.18]
CN5700-8D1	56.00 [1422.40]	6.61 [3.00]	72.50 [1841.50]	16.57 [7.52]
CN5700-9D1	62.00 [1574.80]	7.32 [3.32]	78.50 [1993.90]	17.28 [7.84]
CN5700-10D1	68.00 [1727.20]	8.02 [3.64]	84.50 [2146.30]	17.98 [8.16]
CN5700-11D1	74.00 [1879.60]	8.73 [3.96]	90.50 [2298.70]	18.69 [8.48]
CN5700-12D1	80.00 [2032.00]	9.43 [4.28]	96.50 [2451.10]	19.38 [8.80]

Material : Cast Iron ASTM A48 Class 30B
Dimensions : All are in Inch, [] = MM



BRASS PLUG

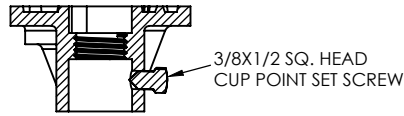
BASE

**STEEL PIPE
SCH. 40**

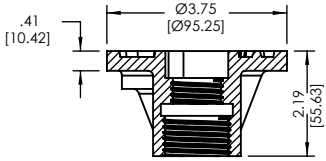
SIP Item #	Description	Weight (LBS/KG)
CN5700L	Lid	1.93 [0.88]
CN5700BP	Brass Plug	0.25 [0.12]
CN5700R	Spring Steel Ring	0.02 [0.01]
CN5700B	Base	7.76 [3.52]

General Table				
SIP Item #	Steel Pipe		Total	
	PL	Weight (LBS/KG)	TL Min-Max.	Weight (LBS/KG)
CN5701-12D1-OT	88.00 [2235.20]	10.30 [4.67]	91.16-104.50 [2315.47-2654.30]	20.25 [9.19]

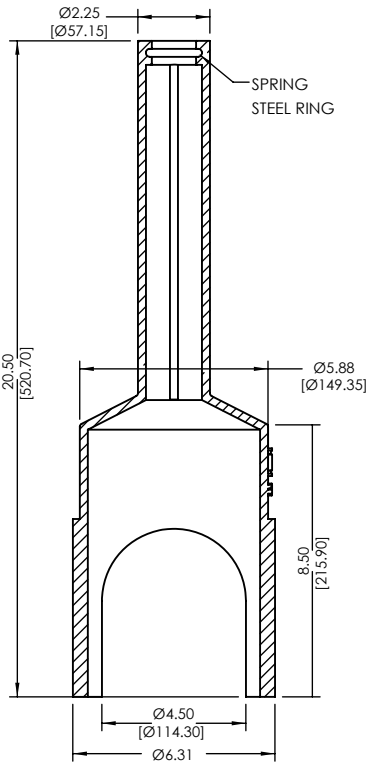
Material : Cast Iron ASTM A48 Class 30B
 Dimensions : All are in Inch, [] = MM



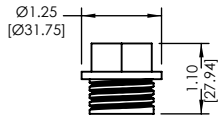
REPAIR LID
LID DIMENSIONS
ARE THE SAME
(SOLD SEPERATELY)



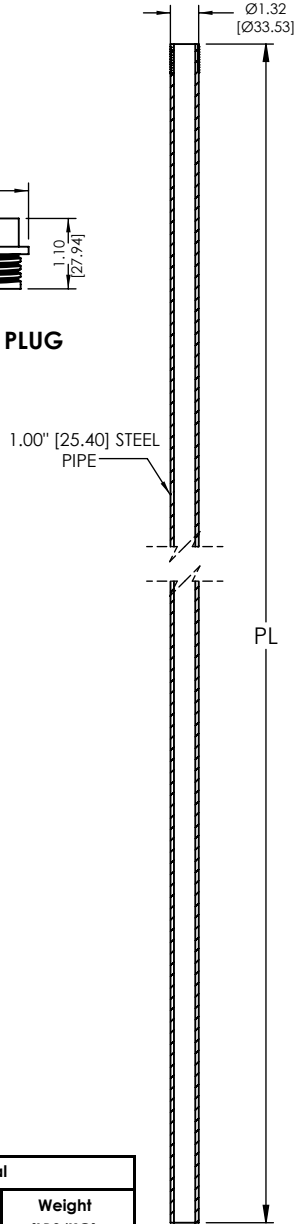
LID



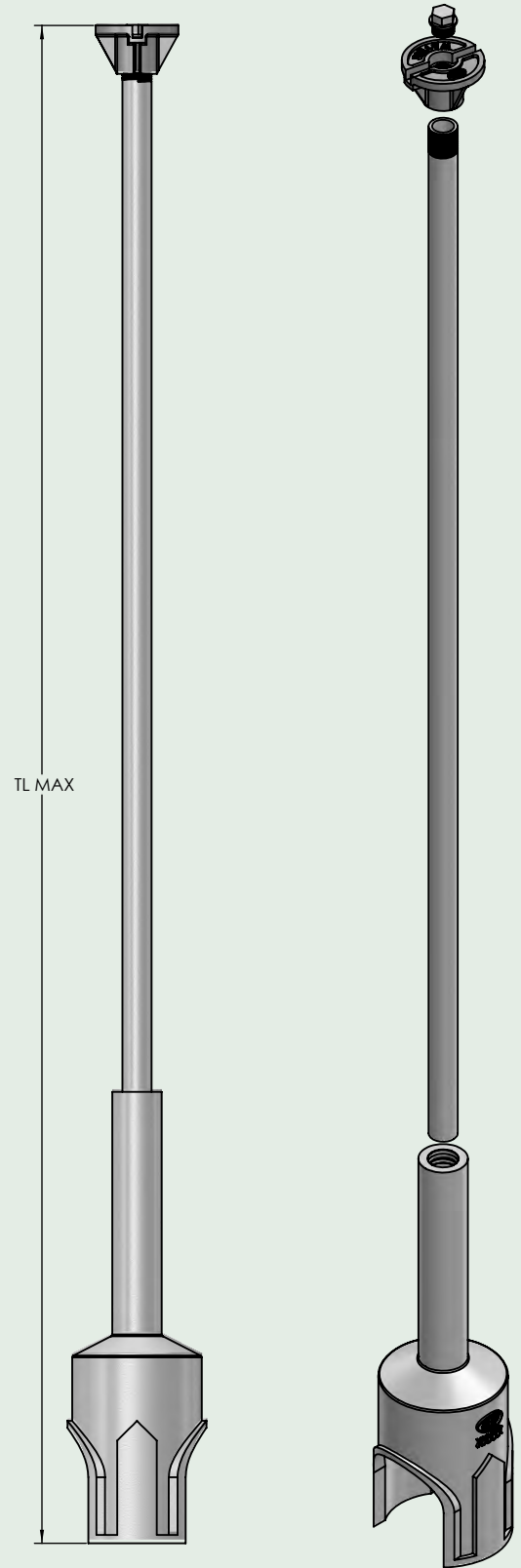
BASE



BRASS PLUG



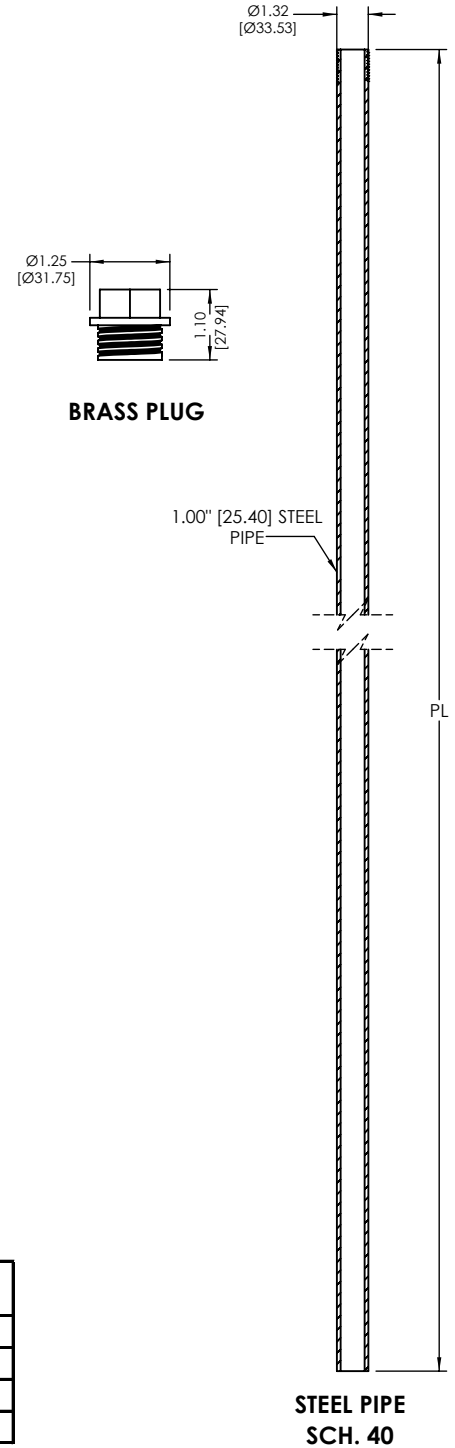
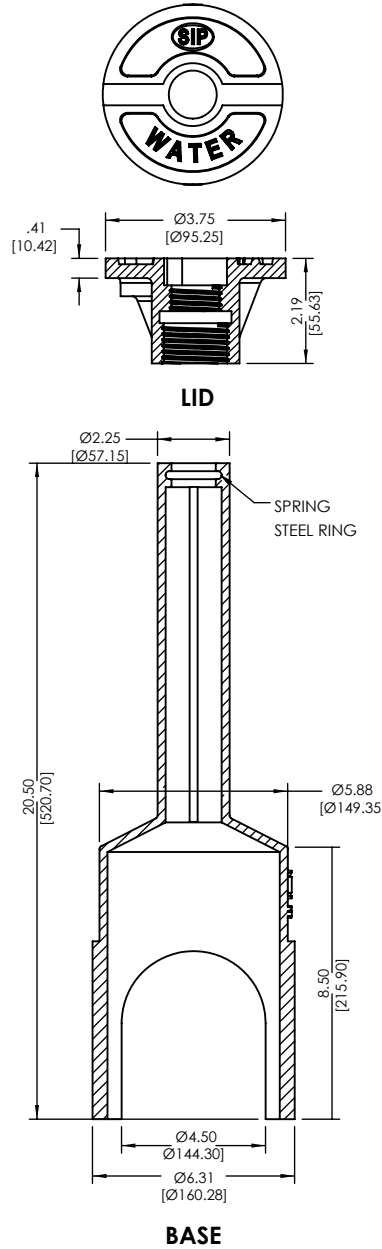
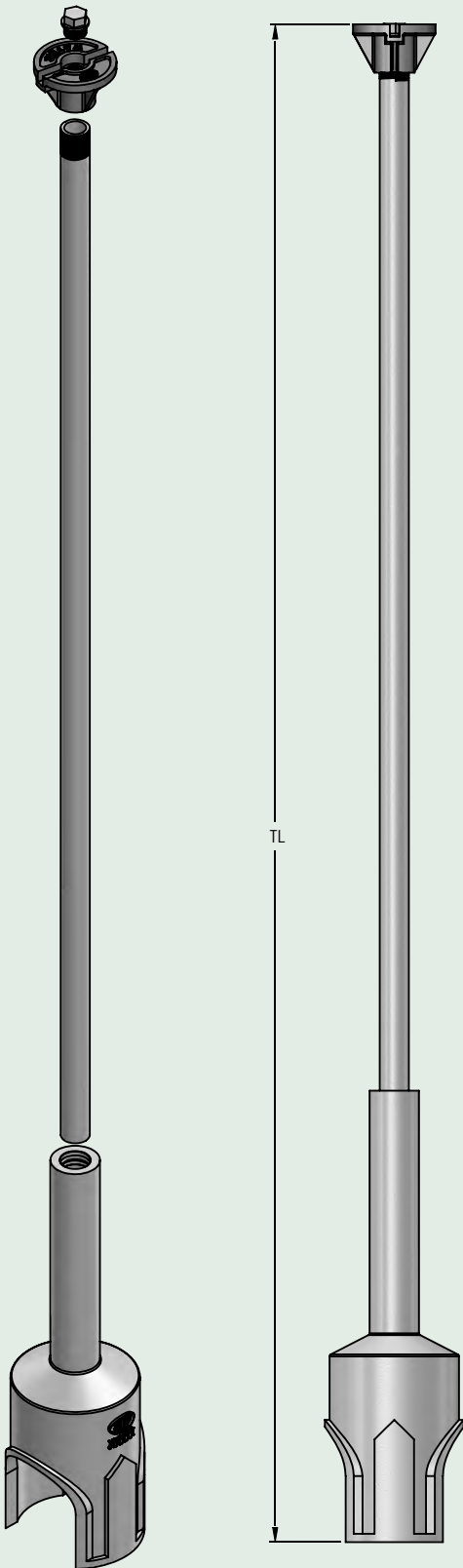
STEEL PIPE
SCH. 40



SIP Item #	Description	Weight (LBS/KG)
CN5700L	Lid	1.93 [0.88]
CN5700BP	Brass Plug	0.25 [0.12]
CN5700R	Spring Steel Ring	0.02 [0.01]
CN5702B	Base	16.10 [7.31]
CN5700RL	Repair Lid	2.13 [0.97]
	SQ. Head Set Screw	0.03 [0.02]

SIP Item #	Steel Pipe		Total	
	PL	Weight (LBS/KG)	TL Max.	Weight (LBS/KG)
CN5700-7D2	49.63 [1260.30]	5.87 [2.67]	69.13 [1755.90]	24.17 [10.97]
CN5700-8D2	56.00 [1422.40]	6.61 [3.00]	75.50 [1917.70]	24.91 [11.30]
CN5700-9D2	62.00 [1574.80]	7.32 [3.32]	81.50 [2070.10]	25.62 [11.63]
CN5700-10D2	68.00 [1727.20]	8.02 [3.64]	87.50 [2222.50]	26.32 [11.94]
CN5700-11D2	74.00 [1879.60]	8.73 [3.96]	93.50 [2374.90]	27.03 [12.26]
CN5700-12D2	80.00 [2032.00]	9.43 [4.28]	99.50 [2527.30]	27.72 [12.58]

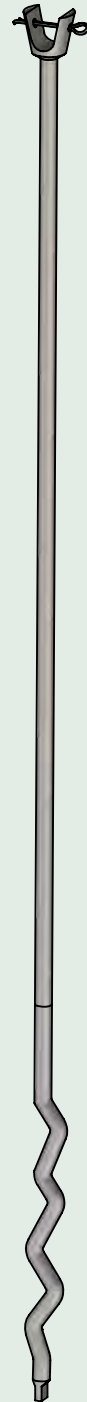
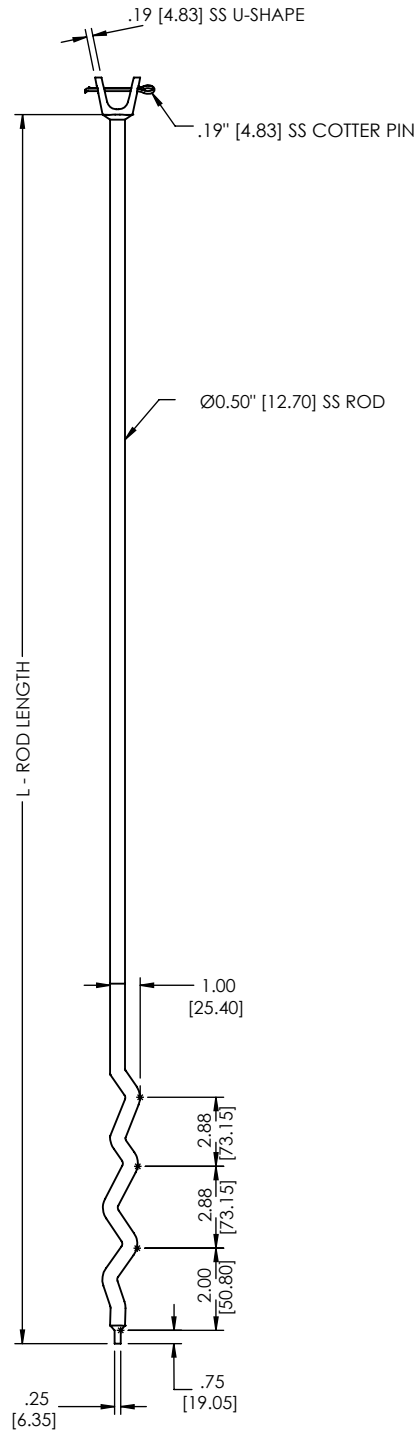
Material : Cast Iron ASTM A48 Class 30B
Dimensions : All are in Inch, [] = MM



SIP Item #	Description	Weight (LBS/KG)
CN5700L	Lid	1.93 [0.88]
CN5700BP	Brass Plug	0.25 [0.12]
CN5700R	Spring Steel Ring	0.02 [0.01]
CN5702B	Base	16.10 [7.31]

General Table				
SIP Item #	Steel Pipe		Total	
	PL	Weight (LBS/KG)	TL Min-Max.	Weight (LBS/KG)
CN5701-12D2-OT	88.00 [2235.20]	10.30 [4.67]	92.41-107.50 [2347.22-2730.50]	28.60 [12.98]

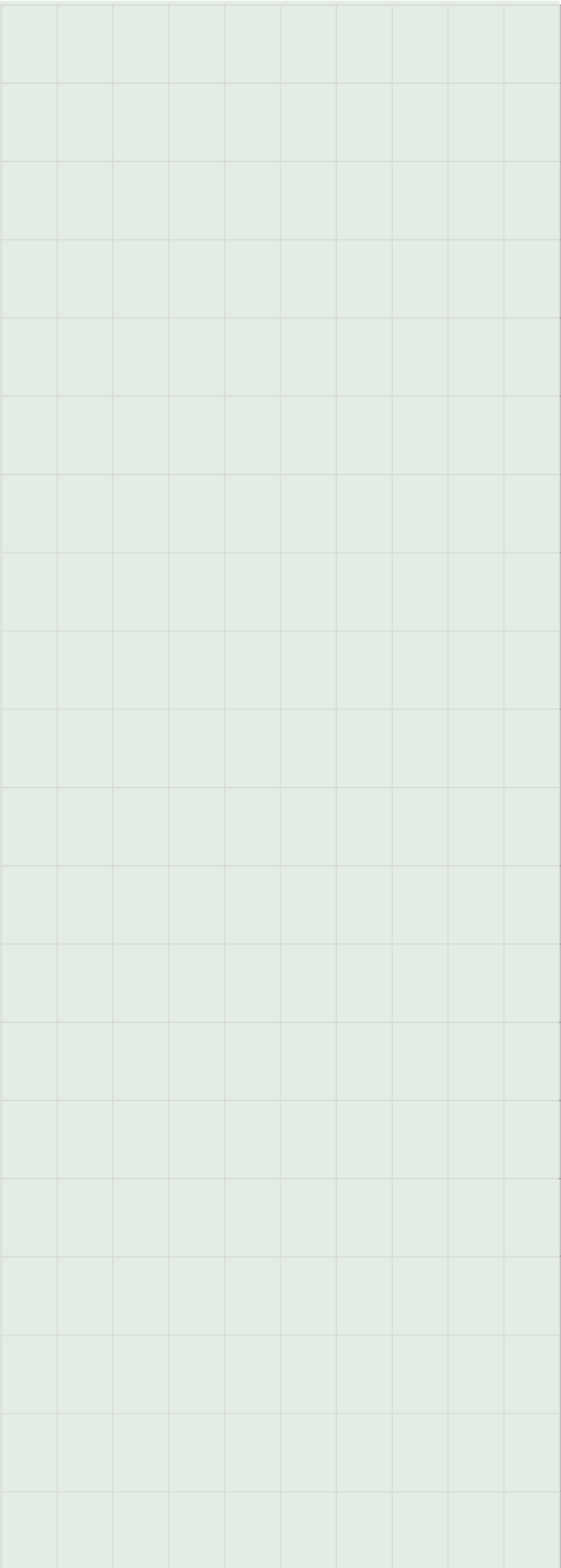
Material : Cast Iron ASTM A48 Class 30B
 Dimensions : All are in Inch, [] = MM



SIP Item #	ROD LENGTH L-INCH	APPROX. WEIGHT (LBS/KG)
CN5704-24	24.00 [609.60]	1.59 [0.73]
CN5704-36	36.00 [914.40]	2.29 [1.04]
CN5704-45	45.00 [1143.00]	2.79 [1.27]
CN5704-48	48.00 [1219.20]	2.98 [1.36]

Material : Rod - SS 304L
 Cotter Pin - SS 304
 Dimensions : All are in Inch, [] = MM

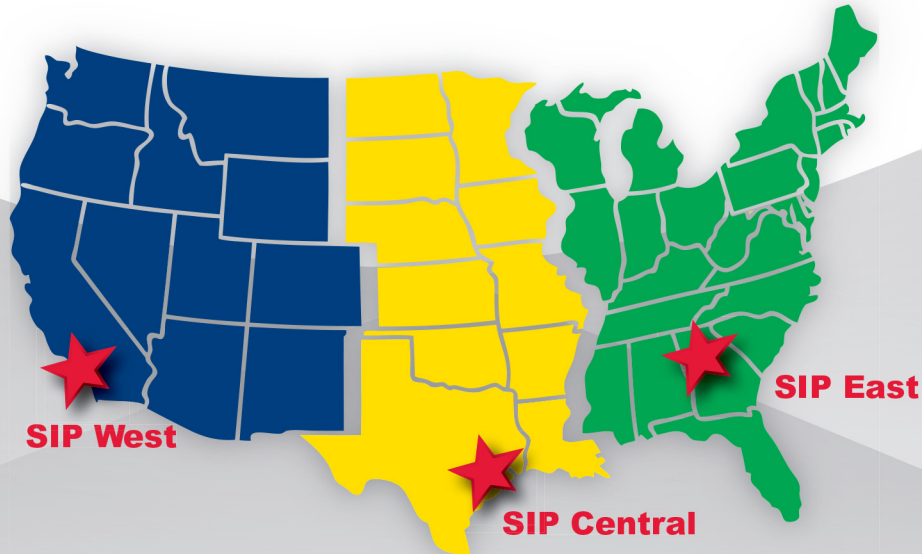
GENERAL NOTES



SIP Industries

Quality Manufacturers Since 1960



PRODUCT LINE

AWWA DI Fittings & Accessories

- C153 Compact MJ Fittings and Acc. 2" - 64"
- C110 Full Body MJ Fittings 2" - 64"
- C153 Trim Tyton® Push-On Fittings 4" - 24"
- C110 Flange Fittings 2" - 64"
- MJ x MJ Adapter for Connecting MJ Bells 3" - 24"
- Stainless Steel & Blue T-Bolts
- Made in India, China & Mexico
- Bare, Cement, Zinc, FBE & Other Linings

Joint Restraint System

- EZD Joint Restraint for DI Pipe 3" - 48"
- EZDTP Joint Restraint Tandem for DI Pipe 3" - 48"
- EZDPTP Joint Restraint for Push-On Joints DI Pipe 3" - 48"
- Ductile Iron Retainer Glands 3" - 30"
- FAR / FAH Flange Adapter for DI Pipe 3" - 48"
- EZFA Restrained Flange Adapter for DI and PVC Pipe 3" - 36"
- EZPVC Joint Restraint for PVC Pipe 3" - 36"
- ULTRA Joint Restraint for PVC Pipe 4" - 12"
- EZPVCPTP Joint Restraint for Push-On Joints PVC Pipe 14" - 36"
- PTPVC Pipe to Pipe Restraint 4" - 48"
- PTPDF Pipe to MJ Fittings Restraint 4" - 48"
- PTPFC Pipe to PVC Fittings Restraint 4" - 12"
- Made in China & USA
- EZ Shield or Shop Coating

Municipal Construction Castings

- Manhole Rings and Cover
- Frames and Grates
- Valve Boxes and Service Boxes
- Water Meter Covers and Boxes
- Cleanout and Monument Boxes
- Detectable Warning Plates
- Extension Rings
- Trench Grates and Tree Grates
- Made in India & USA

Fabrication Products for DI Pipe

- High Hub Flanges Class 150 and 250. 3" - 64"
- Threaded Bell Flanges 3" - 48"
- Anchor Flanges 3" - 60"
- Filler Flanges 4" - 30"

Other Products and Services

- All Thread Rod
- Pipe Lube and Hydraulic Cement
- Socket Clamps and Lugs
- Flange Packs
- OEM Castings



SIP CORPORATE 8876 Gulf Freeway, Suite 500, Houston, TX 77017

SIP CENTRAL 2900 Patio Drive, Houston, TX 77017

SIP EAST 600 Rayloc Drive, Atlanta, GA 30336

SIP WEST 8333 Almeria Avenue, Fontana, CA 92335

Phone: 877-921-6111 or 713-923-6111 | Fax: 713-923-6114 | www.sipindustries.com | sales@sipindustries.com