



# SIP Industries

Quality Manufacturers Since 1960

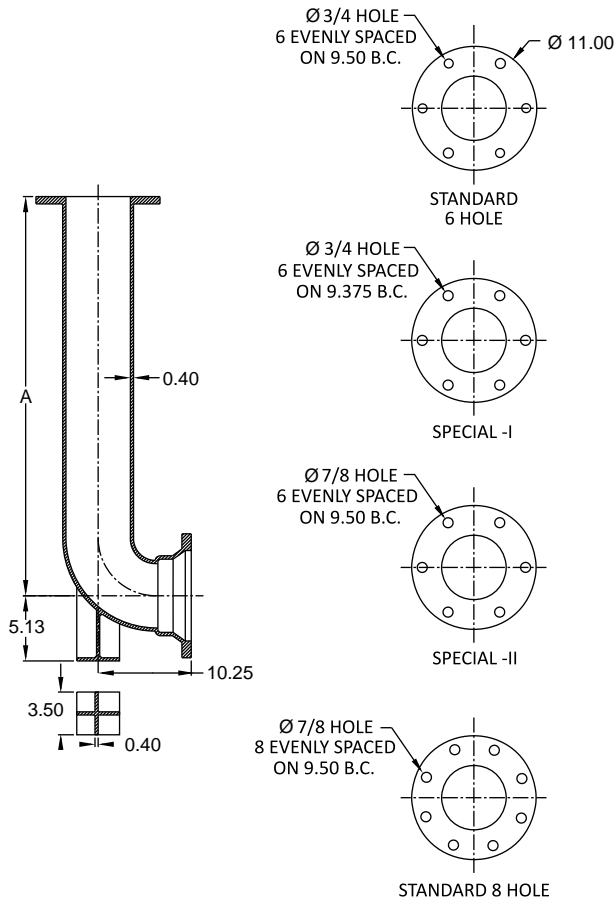
## DUCTILE IRON MECHANICAL JOINT HYDRANT BURIES

### Submittal Information

Project Name / Location:	
Engineer:	
Referenced Specs:	
Distributor / Contractor:	

### Optional Specifications

Drill Pattern:	Standard 6	(6 Hole, ¾" Dia.)
	Special - I	(6 Hole, ¾" Dia. - Los Angeles)
	Special - II	(6 Hole, ¾" Dia. - San Diego)
	Standard 8	(8 Hole, ¾" Dia.)
Coating:	Asphaltic Seal Coat <i>In Accordance With ANSI/AWWA C104/A21.4</i>	
	Fusion-Bonded Epoxy (FBE) Powder (Red Oxide Color) <i>In Accordance With ANSI/AWWA C116/A21.16</i>	
	Other - Specify:	
Lining:	Cement-Mortar - <i>In Accordance With ANSI/AWWA C104/A21.4</i>	
	Single Lined	Double Lined
	Asphalt Coating	No Asphalt Coating
	Fusion-Bonded Epoxy (FBE) Powder (Red Oxide Color) <i>In Accordance With ANSI/AWWA C116/A21.16</i>	
Bolts / Nuts:	Standard High Strength Low Alloy Steel (HSLA) <i>In Accordance With ANSI/AWWA C111/A21.11</i>	
	Stainless Steel:	Type 304      Type 316
	Other - Specify:	
Gaskets:	Standard SBR (Buna-S) <i>In Accordance With ANSI/AWWA C111/A21.11</i>	
	Other - Specify:	



### Technical Specifications

Select Size	Size	A	Approx. Weight (LBS)
	6x16	16	75
	6x22	22	87
	6x24	24	92
	6x30	30	105
	6x36	36	118
	6x42	42	131
	6x48	48	144
	6x54	54	156

### General Specifications

Material	: Ductile Iron per ASTM A536
Pressure	: 350 PSI rating
Testing	: In accordance with ANSI/AWWA C153/A21.53 and UL, FM requirements
Laying Length	: As noted above
Deflection	: 7° for MJ Bell
Flanges	: Flanged ends on fittings match ANSI/AWWA C115/A21.15 and ANSI B16.1 class 125 flanges In accordance with ANSI/AWWA C110/A21.10
Weight	: Are in pounds, unless noted otherwise and do not include accessories, cement lining and coating
Dimensions	: All dimensions are in inches, unless noted otherwise.
Installations	: Per ANSI/AWWA C600 and C111 using DIP conforming to C150/C151 and PVC pipe conforming to C900
Approvals	: FM Approved   UL Approved   NSF/ANSI Standards 61 & 372 Conforms to AWWA C503 standard



Supporting documentation for the above 'General Specifications' and 'Optional Specifications' are available upon request to review, in addition to Installation Instructions and any requested material samples

Please contact SIP for technical assistance of nonstandard applications and pressures

Please refer to our web page [www.sipindustries.com](http://www.sipindustries.com) for up to date product data and technical advisories

8876 Gulf Freeway - Suite 500 - Houston, TX 77017 | Phone: 713-923-6111 | Fax: 713-923-6114 | [www.sipindustries.com](http://www.sipindustries.com) | [sales@sipindustries.com](mailto:sales@sipindustries.com)



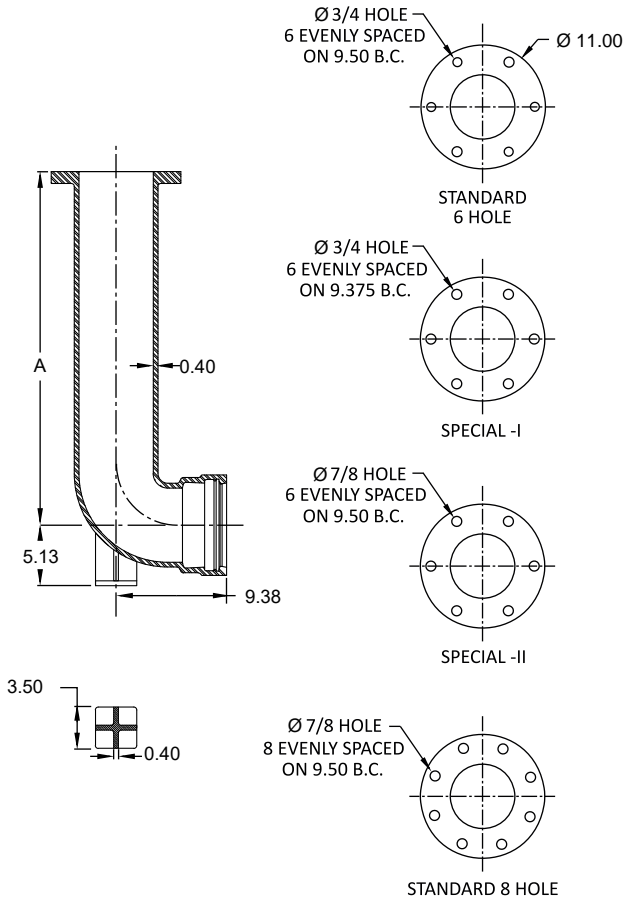
## DUCTILE IRON PUSH-ON HYDRANT BURIES

### Submittal Information

Project Name / Location:	
Engineer:	
Referenced Specs:	
Distributor / Contractor:	

### Optional Specifications

Drill Pattern:	Standard 6	(6 Hole, ¾" Dia.)
	Special - I	(6 Hole, ¾" Dia. - Los Angeles)
	Special - II	(6 Hole, ¾" Dia. - San Diego)
	Standard 8	(8 Hole, ¾" Dia.)
Coating:	Asphaltic Seal Coat <i>In Accordance With ANSI/AWWA C104/A21.4</i>	
	Fusion-Bonded Epoxy (FBE) Powder (Red Oxide Color) <i>In Accordance With ANSI/AWWA C116/A21.16</i>	
	Other - Specify:	
Lining:	Cement-Mortar - <i>In Accordance With ANSI/AWWA C104/A21.4</i>	
	Single Lined	Double Lined
	Asphalt Coating	No Asphalt Coating
	Fusion-Bonded Epoxy (FBE) Powder (Red Oxide Color) <i>In Accordance With ANSI/AWWA C116/A21.16</i>	
Bolts / Nuts:	Standard High Strength Low Alloy Steel (HSLA) <i>In Accordance With ANSI/AWWA C111/A21.11</i>	
	Stainless Steel:	Type 304      Type 316
	Other - Specify:	
Gaskets:	Standard SBR (Buna-S) <i>In Accordance With ANSI/AWWA C111/A21.11</i>	
	Other - Specify:	



### Technical Specifications

Select Size	Size	A	Approx. Weight (LBS)
	6x16	16	75
	6x22	22	87
	6x24	24	92
	6x30	30	105
	6x36	36	118
	6x42	42	131
	6x48	48	144
	6x54	54	156

### General Specifications

Material	: Ductile Iron per ASTM A536
Pressure	: 350 PSI rating
Testing	: In accordance with ANSI/AWWA C153/A21.53 and UL, FM requirements
Laying Length	: As noted above
Joint	: TRIM TYTON® push-on bell joint design, manufactured by SIP Industries, under license from the United States Pipe and Foundry Company Note: Push-On End Ears are for installation purposes
Deflection	: 5° for Push-On Bell
Flanges	: Flanged ends on fittings match ANSI/AWWA C115/A21.15 and ANSI B16.1 class 125 flanges In accordance with ANSI/AWWA C110/A21.10
Weight	: Are in pounds, unless noted otherwise and do not include accessories, cement lining and coating
Dimensions	: All dimensions are in inches, unless noted otherwise.
Installations	: Per ANSI/AWWA C600 and C111
Approvals	: UL Approved   NSF/ANSI Standards 61 & 372 Conforms to AWWA C503 standard

Please refer to our web page [www.sipindustries.com](http://www.sipindustries.com) for up to date product data and technical advisories





# SIP Industries

Quality Manufacturers Since 1960

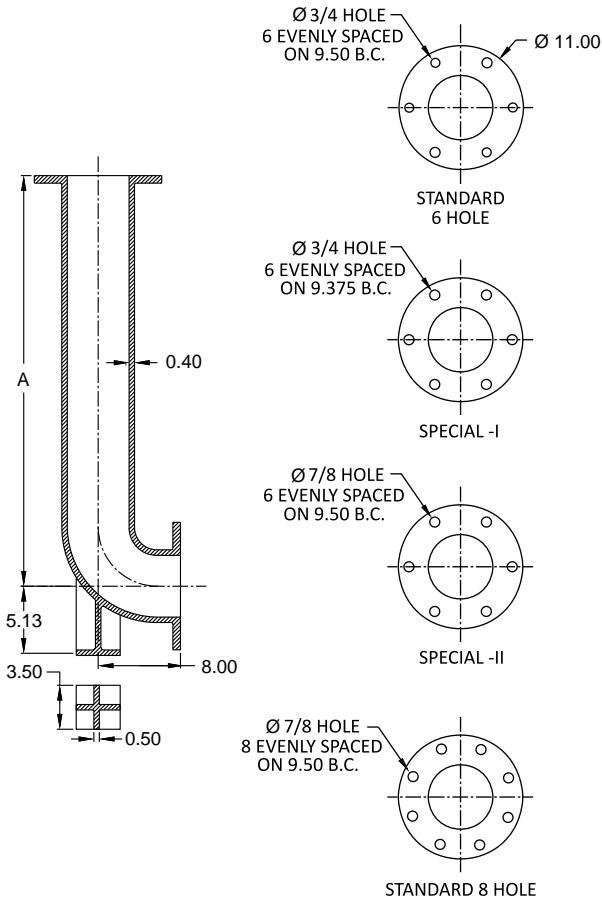
## DUCTILE IRON FLANGE HYDRANT BURIES

### Submittal Information

<b>Project Name / Location:</b>	
<b>Engineer:</b>	
<b>Referenced Specs:</b>	
<b>Distributor / Contractor:</b>	

### Optional Specifications

Drill Pattern:	Standard 6	(6 Hole, 3/4" Dia.)
	Special - I	(6 Hole, 3/4" Dia. - Los Angeles)
	Special - II	(6 Hole, 3/4" Dia. - San Diego)
	Standard 8	(8 Hole, 7/8" Dia.)
Coating:	Asphaltic Seal Coat <i>In Accordance With ANSI/AWWA C104/A21.4</i>	
	Fusion-Bonded Epoxy (FBE) Powder (Red Oxide Color) <i>In Accordance With ANSI/AWWA C116/A21.16</i>	
	Other - Specify:	
Lining:	Cement-Mortar - <i>In Accordance With ANSI/AWWA C104/A21.4</i>	
	Single Lined	Double Lined
	Asphalt Coating	No Asphalt Coating
	Fusion-Bonded Epoxy (FBE) Powder (Red Oxide Color) <i>In Accordance With ANSI/AWWA C116/A21.16</i>	
Bolts / Nuts:	Standard Carbon Steel: Type A307	
	Stainless Steel:	Type 304      Type 316
	Other - Specify:	
Gaskets:	Standard SBR (Buna-S) <i>In Accordance With ANSI/AWWA C111/A21.11</i>	
	Other - Specify:	



### Technical Specifications

Select Size	Size	A	Approx. Weight (LBS)
	6x24	24	98
	6x30	30	111
	6x36	36	125
	6x42	42	138
	6x48	48	151
	6x54	54	164

### General Specifications

<b>Material</b>	: Ductile Iron per ASTM A536
<b>Pressure</b>	: 250 PSI rating
<b>Testing</b>	: In accordance with ANSI/AWWA C110/A21.10 and UL, FM requirements
<b>Laying Length</b>	: As noted above
<b>Flanges</b>	: Flanged ends on fittings match ANSI/AWWA C115/A21.15 and ANSI B16.1 class 125 flanges In accordance with ANSI/AWWA C110/A21.10
<b>Weight</b>	: Are in pounds, unless noted otherwise and do not include accessories, cement lining and coating
<b>Dimensions</b>	: All dimensions are in inches, unless noted otherwise.
<b>Installations</b>	: Per ANSI/AWWA C600 and C111
<b>Approvals</b>	: NSF/ANSI Standards 61 & 372 Conforms to AWWA C503 standard



Supporting documentation for the above 'General Specifications' and 'Optional Specifications' are available upon request to review, in addition to Installation Instructions and any requested material samples

Please contact SIP for technical assistance of nonstandard applications and pressures

Please refer to our web page [www.sipindustries.com](http://www.sipindustries.com) for up to date product data and technical advisories

8876 Gulf Freeway - Suite 500 - Houston, TX 77017 | Phone: 713-923-6111 | Fax: 713-923-6114 | [www.sipindustries.com](http://www.sipindustries.com) | [sales@sipindustries.com](mailto:sales@sipindustries.com)