



MJ EYE BOLTS

MJ Eye Bolts also known as pigtails are used on a mechanical joint to create an anchor point for rods or bolts to secure components under pressure and for the compression of the MJ joint.

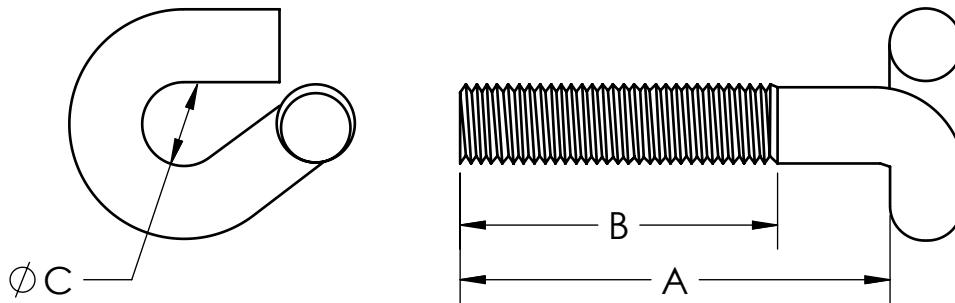


General Specifications

Material : Low alloy steel per ANSI/AWWA C111/121.11
Threads : UNC 2A Rolled Threads per ASME B1.1, Eye bolts can be used in place of T-Head bolts

Used on sizes 4" through 36"

Max. Load of each Eye Bolt: 7,500 lbs, engineered calculations on load will determine the number of Eye Bolts needed.



Technical Specifications

Size	A	B	ØC
5/8 x 3 1/2	3.50	2.50	0.75
3/4 x 3 1/2	3.50	2.50	0.81
3/4 x 4	4.00	3.00	0.81
3/4 x 4 1/2	4.50	3.00	0.81
3/4 x 5	5.00	3.00	0.81
3/4 x 5 1/2	5.50	3.00	0.81
3/4 x 8	8.00	3.00	0.81
1 x 6	6.00	5.00	1.06

Note: Some sort of washer needs to be used on the eye of the bolt to even the load from the Nut on the rod or bolt.