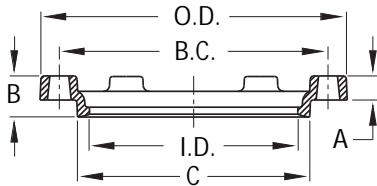


Submittal Information

Project Name / Location:	
Engineer:	
Referenced Specs:	
Distributor / Contractor:	



Optional Specifications

Coating:	Asphaltic Seal Coat <i>In Accordance With ANSI/AWWA C104/A21.4</i>
	Fusion-Bonded Epoxy (FBE) Powder (Red Oxide Color) <i>In Accordance With ANSI/AWWA C116/A21.16</i>
	Other - Specify:
Bolts / Nuts:	Standard High Strength Low Alloy Steel (HSLA) <i>In Accordance With ANSI/AWWA C111/A21.11</i>
	Stainless Steel: Type 304 Type 316
	Other - Specify:
Gaskets:	Standard SBR (Buna-S) <i>In Accordance With ANSI/AWWA C111/A21.11</i>
	Other - Specify:

General Specifications

- Material : Ductile Iron per ASTM A536, Grade 65-45-12
- Pressure : 350 PSI rating for 2" - 24" sizes, 250 PSI rating for 30" - 48" sizes and 150 PSI rating for 54" - 64" sizes
- Testing : In accordance with ANSI/AWWA C111/A21.11
- Dimensions : In accordance with ANSI/AWWA C111/A21.11, C153/A21.53 and are in inches unless otherwise noted
- Weights : Are in pounds, unless otherwise noted and do not include accessories
- Approvals : NSF - 61 & 372 for coating(s) | Standard Glands sizes 3"-24" FM Approved



Technical Specifications

STANDARD GLANDS

Select Size	Size	Series Number	O.D.	A	B	C	I.D.	B.C.	Bolt Hole	Bolt Qty	Approx. Weight (LBS)
	2	6660	6.12	0.62	1.37	3.40	2.61	4.75	0.75	2	1
	3	6661	7.69	0.62	1.37	4.84	4.06	6.19	0.75	4	2
	4	6662	9.12	0.75	1.50	5.92	4.90	7.50	0.88	4	3
	6	6663	11.12	0.88	1.63	8.02	7.00	9.50	0.88	6	5
	8	6664	13.37	1.00	1.75	10.17	9.15	11.75	0.88	6	6
	10	6665	15.62	1.00	1.75	12.22	11.20	14.00	0.88	8	8
	12	6666	17.88	1.00	1.75	14.32	13.30	16.25	0.88	8	9
	14	6667	20.25	1.25	2.00	16.40	15.44	18.75	0.88	10	13
	16	6668	22.50	1.31	2.06	18.50	17.54	21.00	0.88	12	17
	18	6669	24.83	1.38	2.13	20.60	19.64	23.25	0.88	12	30
	20	6670	27.08	1.44	2.19	22.70	21.74	25.50	0.88	14	35
	24	6671	31.58	1.56	2.31	26.90	25.94	30.00	0.88	16	50
	30	6672	39.12	2.00	2.75	33.29	32.17	36.88	1.13	20	85
	36	6673	46.00	2.00	2.75	39.59	38.47	43.75	1.13	24	115
	42	6674	53.12	2.00	2.75	45.79	44.67	50.62	1.38	28	143
	48	6675	60.00	2.00	2.75	52.09	50.97	57.50	1.38	32	237
	54	6676	65.70	2.00	2.75	58.82	57.73	63.20	1.38	36	325
	60	6677	70.22	2.00	2.75	62.87	61.78	67.72	1.38	36	360
	64	6678	74.36	2.00	2.75	66.96	65.84	71.86	1.38	38	415

Technical Specifications

OVERSIZE GLANDS

Select Size	Size	Series Number	O.D.	A	B	C	I.D.	B.C.	Bolt Hole	Bolt Qty	Approx. Weight (LBS)
	2	6660OS	9.12	0.62	1.50	5.92	5.10	7.50	0.88	4	3
	3	6661OS	9.12	0.62	1.50	5.92	5.10	7.50	0.88	4	3
	4	6662OS	9.12	0.62	1.50	5.92	5.10	7.50	0.88	4	3
	6	6663OS	11.12	0.62	1.63	8.02	7.20	9.50	0.88	6	5
	8	6664OS	13.37	0.75	1.75	10.17	9.40	11.75	0.88	6	6
	10	6665OS	15.62	0.88	1.75	12.22	11.50	14.00	0.88	8	8
	12	6666OS	17.88	1.00	2.00	14.32	13.60	16.25	0.88	8	9
	16	6668OS	22.50	1.00	2.06	18.50	17.90	21.00	0.88	12	17

Please refer to our web page www.sipindustries.com for up to date product data and technical advisories



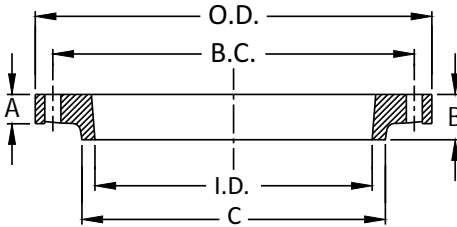
2" - 64" FULL BODY MECHANICAL JOINT GLANDS

Submittal Information

Project Name / Location:	
Engineer:	
Referenced Specs:	
Distributor / Contractor:	

Optional Specifications

Coating:	Asphaltic Seal Coat <i>In Accordance With ANSI/AWWA C104/A21.4</i>
	Fusion-Bonded Epoxy (FBE) Powder (Red Oxide Color) <i>In Accordance With ANSI/AWWA C116/A21.16</i>
	Other - Specify:
Bolts / Nuts:	Standard High Strength Low Alloy Steel (HSLA) <i>In Accordance With ANSI/AWWA C111/A21.11</i>
	Stainless Steel: Type 304 Type 316
	Other - Specify:
Gaskets:	Standard SBR (Buna-S) <i>In Accordance With ANSI/AWWA C111/A21.11</i>
	Other - Specify:



General Specifications

Material	:	Ductile Iron per ASTM A536, Grade 65-45-12
Pressure	:	350 PSI rating for 2" - 24" sizes, 250 PSI rating for 30" - 48" sizes and 150 PSI rating for 54" - 64" sizes
Testing	:	In accordance with ANSI/AWWA C111/A21.11
Dimensions	:	In accordance with ANSI/AWWA C111/A21.11, C110/A21.10 and are in inches unless otherwise noted
Weights	:	Are in pounds, unless otherwise noted and do not include accessories
Approvals	:	NSF - 61 & 372 for coating(s)



Technical Specifications

Select Size	Size	Series Number	O.D.	A	B	C	I.D.	B.C.	Bolt Hole	Bolt Qty	Approx. Weight (LBS)
	2	6693	6.12	0.62	1.37	3.40	2.61	4.75	0.75	2	1.00
	3	6694	7.69	0.62	1.37	4.84	4.06	6.19	0.75	4	3.71
	4	6695	9.12	0.75	1.50	5.92	4.90	7.50	0.88	4	6.04
	6	6696	11.12	0.88	1.63	8.02	7.00	9.50	0.88	6	10.45
	8	6697	13.37	1.00	1.75	10.17	9.15	11.75	0.88	6	14.39
	10	6698	15.62	1.00	1.75	12.22	11.20	14.00	0.88	8	20.07
	12	6699	17.88	1.00	1.75	14.32	13.30	16.25	0.88	8	23.83
	14	6700	20.25	1.25	2.00	16.40	15.44	18.75	0.88	10	36.25
	16	6701	22.50	1.31	2.06	18.50	17.54	21.00	0.88	12	43.93
	18	6702	24.75	1.38	2.13	20.60	19.64	23.25	0.88	12	52.32
	20	6703	27.00	1.44	2.19	22.70	21.74	25.50	0.88	14	63.01
	24	6704	31.50	1.56	2.31	26.90	25.94	30.00	0.88	16	85.91
	30	6705	39.12	2.00	2.75	33.29	32.17	36.88	1.13	20	174.20
	36	6706	46.00	2.00	2.75	39.59	38.47	43.75	1.13	24	227.65
	42	6707	53.12	2.00	2.75	45.79	44.67	50.62	1.38	28	299.91
	48	6708	60.00	2.00	2.75	52.09	50.97	57.50	1.38	32	365.57
	54	6709	65.70	2.00	2.75	58.82	57.73	63.20	1.38	36	355.78
	60	6709.60	70.22	2.00	2.75	62.87	61.78	67.72	1.38	36	406.10
	64	6709.64	74.36	2.00	2.75	66.96	65.84	71.86	1.38	38	436.45

Supporting documentation for the above 'General Specifications' and 'Optional Specifications' are available upon request to review, in addition to Installation Instructions and any requested material samples

Please contact SIP for technical assistance of nonstandard applications and pressures

Please refer to our web page www.sipindustries.com for up to date product data and technical advisories