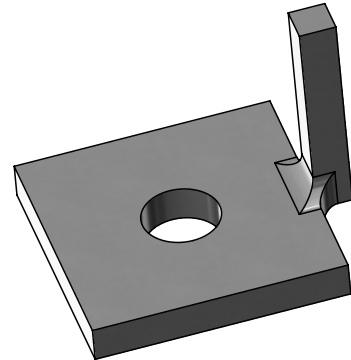




LUG WASHER

Lug Washers are designed to be used as anti-rotation collars for rods or bolts used to strain devices, pipes or fittings.



General Specifications

Material	:	Gray Cast Iron ASTM 48
Sizes	:	Lug Washer is designed for ¾" and 1" Bolts or Rods.
Installation	:	Rods or Bolt pass through hole and secure to the Socket Clamps, Riser Clamps, Re-tainer Clamps or Friction Clamps. A flat washer should still be used between the Lug Washer and nut.