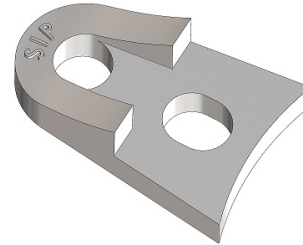




DUC LUG

Duc Lugs are designed to assist in restraining of mechanical joint fittings, valves, hydrants and pipes by threaded.



General Specifications

- Material : Manufactured with high strength ductile iron per ASTM A 536, Grade 65-45-12
- Sizes : Designed for use on sizes 4" through 16" pipe.
Designed for 3/4" Bolts and Rods.
- Installation : Installed between MJ Bell and MJ Gland

Please refer to the chart below for determining the number of Duc Lugs to be used depending on the pipe size and pipe line working pressure.

Technical Information

Minimum Duc Lugs Required For Each MJ Bell									
Pipe Size	Working Pressure (PSI)*								
	100	125	150	200	225	250	300	325	350
4	2	2	2	2	2	2	2	2	2
6	2	2	2	2	3	3	3	4	4
8	2	2	3	4	4	4	6	6	6
10	4	4	4	6	6	8	8	8	NR
12	4	4	6	8	8	8	NR	NR	NR
14	5	6	8	10	NR	NR	NR	NR	NR
16	6	8	10	12	NR	NR	NR	NR	NR

*Pressure ratings include a nominal 2:1 Safety Factor.

NR - Not Recommended