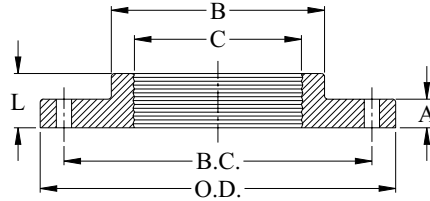


## COMPANION FLANGES FOR STEEL PIPE

### General Specifications

Material	:	Ductile Iron per ASTM A536
Dimensions	:	Per ANSI/AWWA C115/A21.5
Pressure	:	250 Psi
Flange Threads	:	Thread per ASME B16.6 for IPS pipe Drilling: Per ASME B16.6

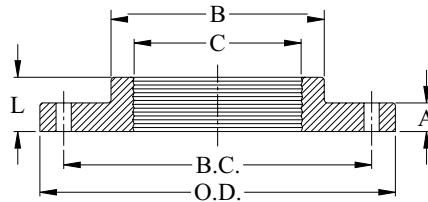
### **COMPANION FLANGES**



### Technical Specifications

Size	Flange O.D.	A	L	B	C	B.C.	Bolt Hole Dia.	Bolt Hole Qty
1 ½	5.00	0.56	0.88	2.56	1.89	3.88	0.63	4
2	6.00	0.62	1.00	3.06	2.36	4.75	0.75	4
2 ½	7.00	0.69	1.12	3.56	2.87	5.50	0.75	4
3	7.50	0.75	1.19	4.25	3.39	6.00	0.75	4
3 ½	8.50	0.81	1.25	4.81	3.86	7.00	0.75	8
4	9.00	0.94	1.31	5.31	4.41	7.50	0.75	8
5	10.00	0.94	1.44	6.44	5.43	8.50	0.89	8
6	11.00	1.00	1.56	7.56	6.42	9.50	0.89	8
8	13.50	1.12	1.75	9.69	8.43	11.75	0.89	8
10	16.00	1.19	1.94	11.94	10.43	14.25	1.00	12
12	19.00	1.25	2.19	14.06	12.40	17.00	1.00	12

### **REDUCING COMPANION FLANGES**



### Technical Specifications

Size	Flange O.D.	A	L	B	C	B.C.	Bolt Hole Dia.	Bolt Hole Qty
4 x 2	9.00	0.94	1.00	3.06	2.36	7.50	0.75	8
4 x 3	9.00	0.94	1.19	4.25	3.39	7.50	0.75	8
5 x 4	10.00	0.94	1.31	5.31	4.41	8.50	0.89	8
6 x 2	11.00	1.00	1.06	3.06	2.36	9.50	0.89	8
6 x 4	11.00	1.00	1.31	5.31	4.41	9.50	0.89	8
6 x 5	11.00	1.00	1.44	6.44	5.43	9.50	0.89	8
8 x 2	13.50	1.12	1.19	3.06	2.36	11.75	0.89	8
8 x 3	13.50	1.12	1.19	4.25	3.39	11.75	0.89	8
8 x 4	13.50	1.12	1.31	5.31	4.41	11.75	0.89	8
8 x 5	13.50	1.12	1.44	6.44	5.43	11.75	0.89	8
8 x 6	13.50	1.12	1.56	7.56	6.42	11.75	0.89	8