



# SIP Industries

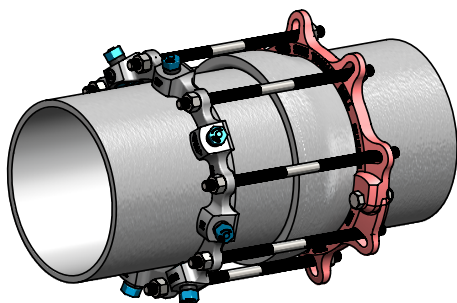
Quality Manufacturers Since 1960

**EZ GRIP®**  
EZDPTP

## 3" - 36" PIPE TO PIPE BELL JOINT RESTRAINT FOR DI PIPE

### Submittal Information

Project Name / Location:	
Engineer:	
Referenced Specs:	
Distributor / Contractor:	



### Optional Specifications

Coating:	Standard Alkyd, Direct To Metal (DTM) Enamel (Red) - Harness Body Standard Alkyd, Direct To Metal (DTM) Enamel (Black) - DI Restraint		
	EZ-Shield® Polyester Based Powder Coating (Red) - Harness Body EZ-Shield® Polyester Based Powder Coating (Black) - DI Restraint		
	Other - Specify:		
Bolts, Nuts & Rods:	High Strength Low Alloy Steel (HSLA) In Accordance With ANSI/AWWA C111/A21.11		
	Fluoropolymer Corrosion Resistant Coating		
	Stainless Steel:	Type 304	Type 316
	Other - Specify:		

### General Specifications

- Material** : Harness body, gland and wedges are Ductile Iron per ASTM A536, Grade 65-45-12  
Clamping bolts and nuts are zinc plated carbon steel, ASTM 307
- Pressure** : Pressure rating equal to that of the DI pipe rating, with a minimum 2:1 safety factor. The grip of the wedges increase as the hydrostatic pressure increases
- Dimensions** : EZD - EZ Grip® Restraint and the Split Ring comply with all applicable dimensions of ANSI/AWWA C111/A21.11
- Installations** : Install in accordance with SIP installation procedures and intent of AWWA C600 / M41.  
Pipe ends must be free from defects to allow wedges to properly engage the pipe ends.  
Wedge pockets must be free from debris intrusion to allow movement, polyethylene wrap of the restraint is recommended as a prevention.  
May be used on Steel Pipe up to 12". For higher sizes please contact SIP Industries.  
\* **Not for use on Spigot End of M.J. x P.E. Fittings or on P.E. x P.E. Fittings.**  
\* **Wedges are heat treated, 370 to 470 BHN hardness range**  
\* **If pipe hardness is over 230 BHN, do not install and contact SIP for further assistance**  
**Note:** There are no additional tools required for installation other than the tools required to install standard sizes of hex nuts from 5/8"-1 3/8". The hex heads and rods shall be designed to tighten clockwise.
- Deflection** : Restraint allows the full joint deflection dictated by pipe manufacturer's recommendation, and maintains the seal while under pressure, and while subjected to ground movements

### Technical Specifications

Select Size	Size	Series Number	Max Pressure Rating (PSI)	Rod Qty.	Rod Size	Max Bell O.D.	Approx. Weight (LBS)
	3	EZDPTP03	350	4	3/4 X 17	5.44	20
	4	EZDPTP04	350	4	3/4 X 17	6.75	22
	6	EZDPTP06	350	6	3/4 X 17	8.75	35
	8	EZDPTP08	350	6	3/4 X 17	11.00	43
	10	EZDPTP10	350	8	3/4 X 24	13.37	62
	12	EZDPTP12	350	8	3/4 X 24	15.50	75
	14	EZDPTP14	350	8	3/4 X 24	18.00	125
	16	EZDPTP16	350	10	3/4 X 24	20.10	143
	18	EZDPTP18	250	10	3/4 X 24	22.50	168
	20	EZDPTP20	250	12	3/4 X 24	24.63	195
	24	EZDPTP24	250	14	3/4 X 24	29.13	275
	30	EZDPTP30	250	18	1 X 24	36.00	500
	36	EZDPTP36	250	22	1 X 24	42.75	500

Supporting documentation for the above 'General Specifications' and 'Optional Specifications' are available upon request to review, in addition to Installation Instructions and any requested material samples

Please contact SIP for technical assistance of nonstandard applications, pressures and bell dimensions

Please refer to our web page [www.sipindustries.com](http://www.sipindustries.com) for up to date product data and technical advisories