



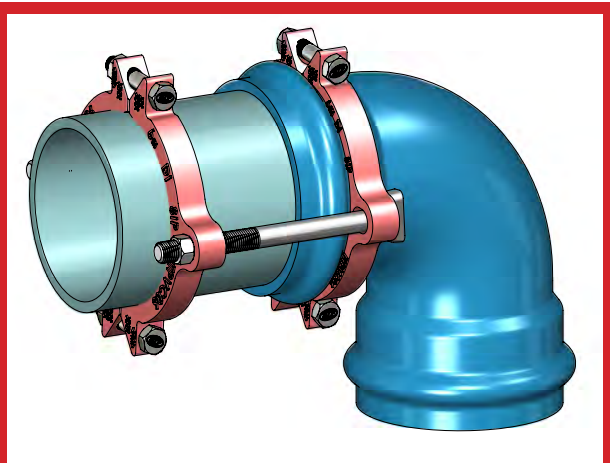
**SIP Industries**  
Quality Manufacturers Since 1960

**EZ GRIP®**  
**PTP SERIES**

PVC PIPE TO PVC PRESSURE FITTING JOINT RESTRAINT

## The EZ GRIP®

Pipe-To-Fitting Joint Restraint is a proven design, offering an efficient, reliable, and inexpensive method of restraining push-on pipe joints by utilizing a series of rigid machined gripping serrations that grab, hold, and secure the PVC pipe to the PVC fitting.



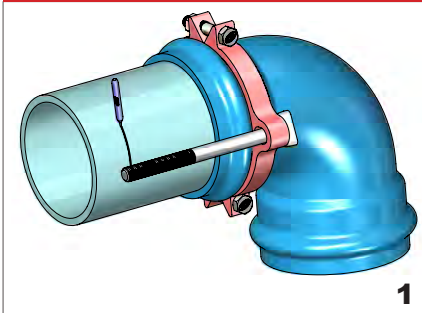
### ADVANTAGES, BENEFITS, FEATURES

- The PTPFC Joint Restraint eliminates the need of timely thrust blocks.
- The PTPFC Joint Restraint performs optimally with AWWA C900 (PVC), C906 (HDPE), or C909 (PVC) pipe, and AWWA C907 (PVC) Fittings.
- Composed of high strength Ductile Iron in compliance with the ASTM A536 Standard, Grade 65-45-12
- T-Bolts, Rods, and Hex nuts are manufactured from high-strength low-alloy (HSLA) steel as per ANSI/AWWA C111/A21.11.
- Machined to exact tolerances with a minimum safety factor of 2:1
- Easily maintains a working water pressure equal to that of the PVC pipe on which it is installed
- The PTPFC Joint Restraint is designed and manufactured to be disassembled, reinstalled, and reusable.
- The PTPFC Joint Restraint can be installed on new or existing water systems.
- The PTPFC Joint Restraint maintains the seal while under pressure, and while subjected to ground movements.
- The internal serrations offer 360° circumferential contact with the pipe wall and increase the grip as the hydrostatic pressure increases while concurrently offering support of the pipe wall.
- With the split castings, the PTPFC Joint Restraint can conveniently be installed in or outside the trench.
- The PTPFC Joint Restraint for PVC Pressure Fittings is provided with a coating that is compatible with most field applied coatings. The standard color of the PTPFC Joint Restraint is red.
- Offered in sizes from 4" up to 12"

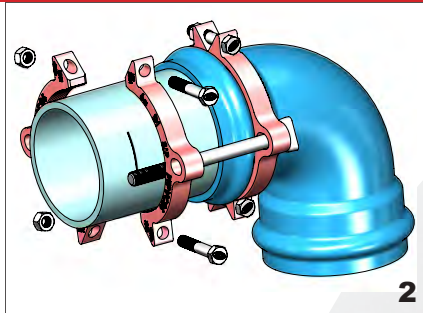
Available:  Import

**Toll Free 877- 921-6111**

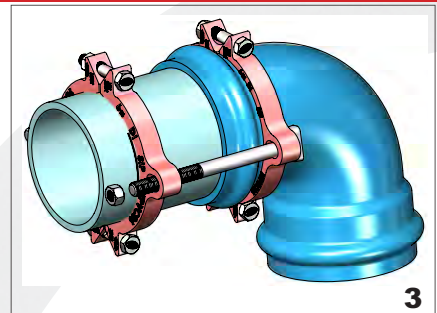
**[www.sipindustries.com](http://www.sipindustries.com)**

**Installation Procedure: 4"-12"**


**1** Insert the gasket and PVC pipe into PVC fitting using the manufacturer's instructions. Next, install the two non-serrated gland halves on the bell of the fitting and tighten the clamping bolts to the recommended torque level given in the table below. Then, insert one of the long T-bolts / threaded rods through one of the bolt holes and mark a line approximately 2 inches from the far end of the bolt/rod (towards the fitting)



**2** Using the T-bolts/rods as guides, assemble the serrated gland halves on the pipe with the far side of the gland in line with the mark on the pipe. Then, tighten the clamping bolts to the given torque levels (see table below).

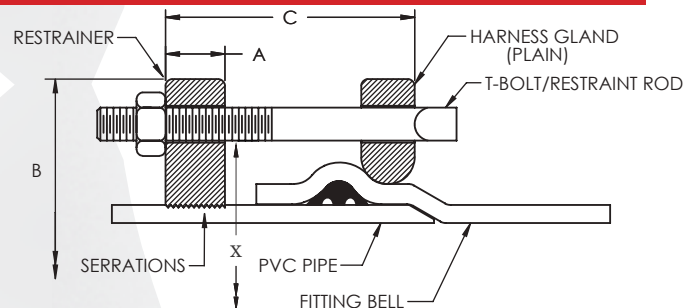


**3** Assemble the remaining T-bolts/rods through the retaining ring and the restraining ring and tighten for a snug fit

**NOTE:** Do not over-tighten the restrainer nuts, hand tight the nuts plus about one turn with a wrench.

**Technical Data**

RECOMMENDED TORQUE (CLAMPING BOLTS)	
PIPE SIZE (IN)	RANGE OF TORQUE (FT/LBS)
4-12	90-110


**Technical Specifications**

NOMINAL PIPE SIZE	C900/C909 PVC PIPES PTPFC SERIES		A	B (APPROX.)	C (MAX.)	X (Min.)	RESTRAINT BOLTS/RODS		CLAMPING BOLTS		APPROX. WEIGHT LBS
	O.D.	ITEM CODE					QTY	SIZE	QTY	SIZE	
4	4.80	PTPFC04	1.12	9.15	6.00	6.29	2	3/4 X 9	4	5/8 X 3 1/2	14
6	6.90	PTPFC06	1.15	11.12	6.00	8.13	2	3/4 X 9	4	5/8 X 3 1/2	16
8	9.05	PTPFC08	1.47	14.75	8.00	10.60	2	3/4 X 12	4	3/4 X 4	30
10	11.10	PTPFC10	1.38	16.82	8.00	12.66	4	3/4 X 12	4	7/8 X 5	46
12	13.20	PTPFC12	1.42	19.45	8.00	14.80	4	3/4 X 12	4	7/8 X 5	50

All dimensions in inches, unless stated otherwise.

Please contact SIP for technical assistance of nonstandard applications, pressures and bell dimensions that exceed listed X dimensions

Please refer to our web page [www.sipindustries.com](http://www.sipindustries.com) for up to date product data and technical advisories

STANDARDIZED PRESSURE RATINGS												
Size	CI O.D.									IPS O.D.		
	ANSI/AWWA C900									ASTM D2241		
	DR14	DR17	DR18	DR21	DR25	DR27.5	DR32.5	DR41	DR51	SDR1	SDR21	SDR26
4	200	-	150	-	100	-	-	-	-	250	200	160
6	200	-	150	-	100	-	-	-	-	250	200	160
8	200	-	150	-	100	-	-	-	-	250	200	160
10	200	-	150	-	100	-	-	-	-	250	200	160
12	200	-	150	-	100	-	-	-	-	250	200	160

**Sample Specifications**

The PVC pipe to PVC pressure fitting joint restraining mechanism shall be designed and manufactured as two identical halves providing joint restraint. The PVC pipe to PVC pressure fitting joint restraint shall be compatible with AWWA C900, C906, C909 pipe and C907 pressure fittings and shall contain a series of rigid integrally machined serrations that grip the outside wall of the PVC Pipe. The PVC pipe to PVC pressure fitting joint restraint shall have the same pressure rating as the pipe with a 2:1 safety factor. The grip of the serrations shall increase as the hydrostatic pressure increases.

There shall be no additional tools required for installation other than the tools required to install standard sizes of hex nuts from 5/8" - 7/8". All hex heads, bolts and rods shall be designed to tighten clockwise. All hex heads, bolts and rods shall be manufactured to allow for disassembly and re-installation of the restraint.

The gland halves shall be manufactured of high strength ductile iron in accordance with the ASTM A536 Standard, Grade 65-45-12. Bolts, rods, and hex nuts shall be manufactured from high-strength low-alloy (HSLA) steel as per ANSI/AWWA C111/A21.11.

The restraining gland shall comply with all applicable dimensions of ANSI/AWWA C907/A21.11 and shall be compatible with all PVC pipe and PVC pressure fittings of the standards

The restraint device for PVC Pipe to PVC pressure fitting shall be SI Industries series PTPFC or equal.

Available:  Import

**PRODUCT LINE****AWWA DI Fittings & Accessories**

- C153 Compact MJ Fittings and Acc. 2" - 64"
- C110 Full Body MJ Fittings 2" - 64"
- C153 Trim Tyton® Push-On Fittings 4" - 24"
- C110 Flange Fittings 2" - 64"
- MJ x MJ Adapter for Connecting MJ Bells 3" - 24"
- Stainless Steel & Blue T-Bolts
- Made in India, China & Mexico
- Bare, Cement, Zinc, FBE & Other Linings

**Joint Restraint System**

- EZD Joint Restraint for DI Pipe 3" - 48"
- EZDTP Joint Restraint Tandem for DI Pipe 3" - 48"
- EZDPTP Joint Restraint for Push-On Joints DI Pipe 3" - 48"
- Ductile Iron Retainer Glands 3" - 30"
- FAR / FAH Flange Adapter for DI Pipe 3" - 48"
- EZFA Restrained Flange Adapter for DI and PVC Pipe 3" - 36"
- EZPVC Joint Restraint for PVC Pipe 3" - 36"
- ULTRA Joint Restraint for PVC Pipe 4" - 12"
- EZPVCPTP Joint Restraint for Push-On Joints PVC Pipe 14" - 36"
- PTPVC Pipe to Pipe Restraint 4" - 48"
- PTPDF Pipe to MJ Fittings Restraint 4" - 48"
- PTPFC Pipe to PVC Fittings Restraint 4" - 12"
- Made in China & USA
- EZ Shield or Shop Coating

**Municipal Construction Castings**

- Manhole Rings and Cover
- Frames and Grates
- Valve Boxes and Service Boxes
- Water Meter Covers and Boxes
- Cleanout and Monument Boxes
- Detectable Warning Plates
- Extension Rings
- Trench Grates and Tree Grates
- Made in India & USA

**Fabrication Products for DI Pipe**

- High Hub Flanges Class 150 and 250. 3" - 64"
- Threaded Bell Flanges 3" - 48"
- Anchor Flanges 3" - 60"
- Filler Flanges 4" - 30"

**Other Products and Services**

- All Thread Rod
- Pipe Lube and Hydraulic Cement
- Socket Clamps and Lugs
- Flange Packs
- OEM Castings



**SIP INDUSTRIES**  
**SERAMPORE**  
SINCE 1960

**SIP CORPORATE** 8876 Gulf Freeway, Suite 500, Houston, TX 77017

**SIP CENTRAL** 2900 Patio Drive, Houston, TX 77017

**SIP EAST** 600 Rayloc Drive, Atlanta, GA 30336

**SIP WEST** 8333 Almeria Avenue, Fontana, CA 92335

**Phone:** 877-921-6111 or 713-923-6111 | **Fax:** 713-923-6114 | [www.sipindustries.com](http://www.sipindustries.com) | [sales@sipindustries.com](mailto:sales@sipindustries.com)

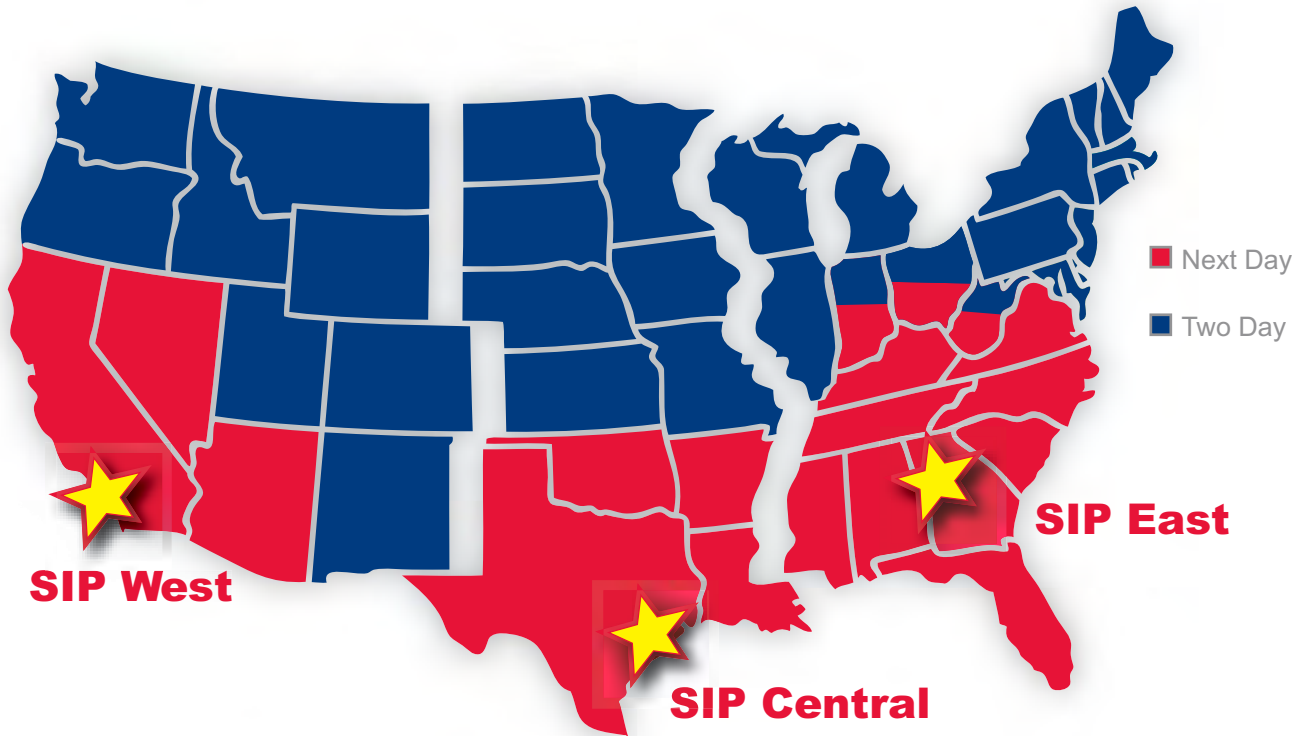
**Toll Free 877- 921-6111**

**[www.sipindustries.com](http://www.sipindustries.com)**



# *SIP Industries*

*Quality Manufacturers Since 1960*



## *Service Is Priority*

*Priority Service to All 50 States & Internationally*

- Same day shipments for orders placed up to 5 pm
- Over 650,000 sq/ft of stocked warehouse space (2" to 48" in stock at all locations)
- Special linings & coatings, drilling/tapping, and machining available
- Engineering services provided for custom product development
- Customer specific processes, item codes, documentation, packaging and shipping instructions
- Premier vendors/service providers used for every outsourced need

**SIP CORPORATE** 8876 Gulf Freeway, Suite 500, Houston, TX 77017

**SIP CENTRAL** 2900 Patio Drive, Houston, TX 77017

**SIP EAST** 600 Rayloc Drive, Atlanta, GA 30336

**SIP WEST** 8333 Almeria Avenue, Fontana, CA 92335